



GREAT BEND CHAMBER OF COMMERCE

A DIGITAL VERSION OF THE *OUTLOOK BUSINESS JOURNAL*, A PUBLICATION OF THE GREAT BEND CHAMBER OF COMMERCE

OUTLOOK

MAY 2020 ISSUE

online 

WE ARE BETTER, TOGETHER

Barton Strong

BARTON STRONG
LAUNCH VIDEO

BARTON STRONG
WEBSITE

BARTON STRONG
GEAR

In response to the needs of our business communities and residents during the COVID-19 events, Barton Strong: Shop Small, Give Big launched the afternoon of Monday, April 20th during a live Chamber Chat with Great Bend Chamber of Commerce President, Megan Barfield, Golden Belt Community Foundation Executive Director, Christy Tustin, and United Way of Central Kansas Executive Director, Gaila Demel.

The three announced the partnership to bring shopping local and giving local together in one platform during the Coronavirus pandemic.

"Our goal (at GBCF) is to connect donors who care to causes that matter," Tustin noted. "It's not every day we can combine helping businesses and charities in the community at the same time."

The Barton Strong website, created by Chamber staff, promotes the sale of gift cards to businesses in Barton County with each purchase being matched, dollar for dollar, and a matching gift made thanks to an initial \$10,000 contribution made by the Dorothy M Morrison Foundation through the Golden Belt Community Foundation.

These matching dollars will be used to directly assist individuals and families in

need right here in Barton County. Every dollar spent through the website will remain local and be matched, doubling the impact of each gift card purchase.

Week one ended with \$8,175 in sales going to 26 businesses. "Writing the checks after the first week to participating businesses who had sales was so exciting - that feeling knowing we are putting money directly into the businesses serving Barton County," Megan Barfield beamed.

By May 1, the \$10,000 goal was exceeded, and 40 businesses had signed up to participate. To hit the \$20,000 mark, the Dorothy M Morrison Foundation and the Albert Gumbir Charitable Fund at the Golden Belt Community Foundation each donated an additional \$5,000 for another \$10,000 matching gift to the Barton Strong program.

To add to the spirit of the program, Barton Strong gear can also now be purchased allowing residents and business owners to show their unity through this together. SS Graphics has provided a site to order things such

as t-shirts, tumblers and more. But it doesn't stop there. Owner, Heather Nicolet, "We are prepared to give back 25% of sales to the Golden Belt Community Foundation to continue their efforts in helping our community!" <https://bartonstrong.spiritsale.com/>

Businesses located in Hoisington and Ellinwood are also encouraged to utilize their local chambers and resources as well. Barton County chambers can come together and unite in times of need and agree now is not the time to exclude.

Barfield adds, "Karen Baldyga with Hoisington Chamber and Jordan Waite with the Ellinwood Chamber, are both phenomenal women and we've discussed how we can help each other and leverage resources and man-power. We all realize that by working together, all businesses in Barton County can benefit from the relationship. Chambers are valuable resources in our communities and so powerful together!"

Visit www.GreatBend.org/BartonStrong to learn more, including the "Frequently Asked Questions" page detailing the execution of Barton Strong. Businesses are still able to sign up and can do so here. ([List Your Business here](#))

SHOP SMALL
GIVE BIG
#BartonStrong

A buy local, give local
community program



Golden Belt Community Foundation Responds to Urgent COVID19 Need with #GivingTuesday

Golden Belt Community is responding to meet the needs of Barton, Pawnee, Rush, and Stafford counties and to inspire transformational generosity by coming together to support our nonprofits through acts of generosity and fundraising for critical services and programs during this pandemic.



#GivingTuesdayNow is a global day of giving and unity set to take place on May 5, 2020 as an emergency response to the unprecedented need caused by COVID-19. The day is designed to drive an influx of generosity, citizen engagement, business and philanthropy activation, and support for communities and nonprofits around the world.

At a time when we are all experiencing the pandemic, generosity is what brings people of all races, faiths, and political views together across the globe. Generosity gives everyone power to make a positive change in the lives of others and is a fundamental value anyone can act on. It's a day for everyone around the world to stand together and give back in all ways, no matter who or where we are.

Golden Belt Community Foundation is standing strong with local communities and is mobilizing its Giving Tuesday network to take care of our communities alongside the entire world with #GivingTuesdayNow. People in local communities have been personally affected by this crisis; medical professionals are being called to duty; and nonprofits are being taxed with increased responsibility as daily life has changed. The foundation is partnering with local nonprofits to offer ways to provide financial contributions.

"Last Giving Tuesday on December 1, 2019, our communities came together to raise over \$200,000 for local organizations. Because we have done it before we know we can do it again. We are asking you to give however you can. No gift or act is too small." said Christy Tustin, executive director, Golden Belt Community Foundation.

People can show their generosity in a variety of ways on this day, whether it's helping a neighbor, advocating for an issue, sharing a skill, or giving to causes, every act of generosity counts. The global movement will emphasize opportunities to give back to communities and causes in safe ways that allow for social connection even while practicing physical distancing.

The local #GivingTuesdayNow campaign will support selected nonprofit organizations addressing the needs of individuals and families with food and housing support, utility assistance, health and mental health care, and other social service needs. Just like Giving Tuesday in the past, donors will select which organizations to receive their gift.

- Continued on Page 3

GivingTuesday continued from Page 2

The campaign will run from Tuesday, May 5th, 2020 to Tuesday, May 12th. Donations may be mailed to: Golden Belt Community Foundation, P.O. Box 1911, Great Bend, KS 67530 or made online at goldenbeltcf.org/donate.

All donations made for Giving Tuesday Now will be matched proportionally with a \$10,000 match pool, which was generously provided by the Glenn and Elaine Mull Family Fund.

"We know that in the months ahead, our nonprofits will be called upon to assist our local individuals and families who will be recovering from the affects of COVID-19. All gifts received will be granted to the selected nonprofit organization," Tustin said.

Those interested in joining Golden Belt Community Foundation's #GivingTuesdayNow efforts and to view the giving form should visit www.goldenbeltcf.org.

For more details about the GivingTuesday movement, visit the GivingTuesday website (www.now.givingtuesday.org), Facebook page (<https://www.facebook.com/GivingTuesday>) or follow @GivingTuesday and #GivingTuesdayNow on Twitter. For youth interested

in joining the movement, visit GivingTuesdayKids.org for inspiration and project ideas.

Golden Belt Community Foundation At \$23 million in total assets and more than 180 funds under management, Golden Belt Community Foundation has been connecting people who care to causes that matter since 1996. Golden Belt Community Foundation exists to provide non-profit organizations in central Kansas with a permanent source of support and to serve as a vehicle for charitable giving for donors. GBCF serves the counties of Barton, Pawnee, Rush, and Stafford. For more information about Golden Belt Community Foundation, call (620) 792-3000 or visit their website at www.goldenbeltcf.org.

About Giving Tuesday Giving Tuesday is a global generosity movement unleashing the power of people and organizations to transform their communities and the world. Giving Tuesday was created in 2012 as a simple idea: a day that encourages people to do good. Over the past eight years, it has grown into a global movement that inspires hundreds of millions of people to give, collaborate, and celebrate generosity.

U.S. Department of Commerce Secretary Wilbur Ross and U.S. Census Bureau Director Steven Dillingham Statement on 2020 Census Operational Adjustments Due to COVID-19

The 2020 Census is underway and more households across America are responding every day. Over 70 million households have responded to date, representing over 48% of all households in America. In light of the COVID-19 outbreak, the U.S. Census Bureau is adjusting 2020 Census operations in order to:

Protect the health and safety of the American public and Census Bureau employees.

Implement guidance from federal, state and local authorities.

Ensure a complete and accurate count of all communities.

The Census Bureau temporarily suspended 2020 Census field data collection activities in March. Steps are already being taken to reactivate field offices beginning June 1, 2020, in preparation for the resumption of field data collection operations as quickly as possible

following June 1.

In-person activities, including all interaction with the public, enumeration, office work and processing activities, will incorporate the most current guidance to promote the health and safety of staff and the public. This will include recommended personal protective equipment (PPE) and social distancing practices.

Once 2020 Census data collection is complete, the Census Bureau begins a lengthy, thorough and scientifically rigorous process to produce the apportionment counts, redistricting information and other statistical data products that help guide hundreds of billions of dollars in public and private sector spending per year.

In order to ensure the completeness and accuracy of the 2020 Census, the Census

Together, we can ensure
that our community receives the
resources it needs.

United States®
**Census
2020**

Learn more at 2020census.gov.

Bureau is seeking statutory relief from Congress of 120 additional calendar days to deliver final apportionment counts.

Under this plan, the Census Bureau would extend the window for field data collection and self-response to October 31, 2020, which will allow for apportionment counts to be delivered to the President by April 30, 2021, and redistricting data to be delivered to the states no later than July 31, 2021.

GREAT BEND

CHAMBER OF COMMERCE

FEATURED AMBASSADOR

Heather Nicolet

About Chamber Ambassadors:

The Great Bend Chamber of Commerce Ambassador Club is made up of 30 men and women from the Great Bend business community who represent the Chamber in a number of ways.

They host the weekly Chamber Coffees, attend Business After Hours and Ribbon Cuttings, serve on Chamber committees, and assist with member recruitment and retention efforts.

They also volunteer at numerous Chamber events, such as the Great Bend Farm Ranch and Hemp Expo, Gary Gore Memorial Golf Tournament and the Annual Banquet and Meeting.

To find out how you can become a member of the Ambassador Club, contact Lee Ann June at the Chamber office, 620-792-2401, marketing@greatbend.org, or www.greatbend.org/ambassadors

What brought you to Great Bend? What keeps you here?

I was born in Great Bend and spent a portion of my childhood living in the country by Holyrood and about 10 years in Texas on the Gulf. Family is incredibly important to me, which is what brought me back to the area. I've always had a great appreciation for what Great Bend has to offer and love how involved our community is, and the wide array of things to do throughout the year! My son, Lain, and I are frequent visitors to the zoo, water park and playgrounds! All of the amazing improvements to the playgrounds have been phenomenal not to mention the updates to the zoo.



Where do you work and what do you do there (describe your role)?

In 2017 I founded SS Graphics LLC, creating customized apparel and promotional products for businesses, which has had tremendous growth since it's launch. Earlier this year I partnered with MPIRE Companies which has given me the opportunity to be out in the field with my customers to better meet their needs. I know time is one of our most valuable assets and that is why I'm excited to go directly to the customer and customize their experience. I continue to run the business as the General Manager in charge of sales and thoroughly enjoy this "job" every single day!

What's one thing about you that would surprise people?

I am terrified of public speaking. I'm not sure that would be 100% surprising to everyone but it's something I've been pushing myself to do in effort to grow personally and professionally. I truly enjoy sharing with people about what I do and all of the different applications you can use to decorate apparel, cups, and thousands of different items. I have always found it extremely cool but until I jumped out of my comfort zone and presented to groups, I didn't realize others would feel the same. It's a great feeling, after the presentation is over that is!

What energizes you and brings you excitement?

The most exciting thing is when you hand off that custom order and the customer looks at it for the first time as a completed project. We always give a free digital proof before going to production but it's nothing like seeing their idea completed! I once witnessed a customer do an actual happy dance (really there was dancing) as I walked in to deliver a box of completed apparel. BEST FEELING EVER! I've never wished I had my phone out and ready to record more than that moment!!

At what job, would you be terrible?

I think I would be terrible at sitting behind a desk all day with little to no social interaction. That's why I love my job so much. I do have the office/desk time but then I also get to be out socializing. Bringing partners into the business has helped balance my day to day responsibilities.

How long have you been a Chamber Ambassador and what do you like most about it?

I've been a Chamber Ambassador since 2019. My favorite thing about being an Ambassador is greeting y'all at Chamber Coffees! I have so much fun getting to say hello to everyone and handing out tickets for the super neat giveaways our Chamber Coffee Business Host provides.

Heart of Kansas expands telemedicine services to combat COVID-19

Heart of Kansas Family Health Care has expanded telemedicine services at its three locations to further reduce the risk of patient and staff exposure to COVID-19.

"Telemedicine is now available to our patients who need care and treatment from our medical and behavioral health providers," said Brett Middleton, chief executive officer.

"We have provided psychiatric services via telemedicine for about five years but in light of this crisis, we wanted to expand the service for the safety and well-being of patients, families and staff.

"We strongly encourage our patients to take advantage of telemedicine services," Middleton continued.

"It is an effective way for them to receive the valuable medical care they deserve without having to come into the office."

Heart of Kansas staff members understand that some patients may be a bit apprehensive about using this technology.

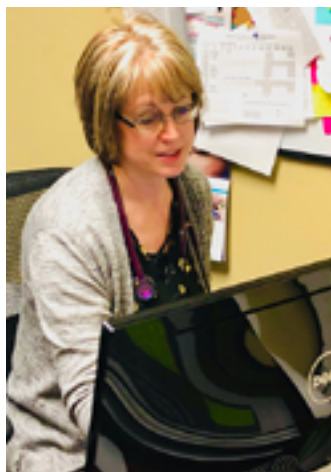
"Yes, we know that some may want to shy away from telemedicine," Middleton said. "However, they can be assured that staff members are available to give them step-by-step instructions; we will walk them through the process."

There is no particular app to download on a computer or mobile device. Instead, Heart of Kansas obtains email addresses from patients and then sets them up in the telemedicine system.

"They will receive an email inviting them to create a log-in for their appointment," Middleton

explained. "If the patient chooses to participate in the platform we have established for telemedicine, they will be able to see their provider on the screen during their appointment."

Telemedicine services are available to all patients, especially those who are considered most at risk for COVID-19.



Those who are at risk include older adults, long-term-care facility residents and people of any age with a serious underlying medical condition, according to the Centers for Disease Control and Prevention.

Underlying conditions include chronic lung disease,

moderate to severe asthma, a compromised immune system, severe obesity, diabetes and liver disease. In addition, people undergoing dialysis for chronic kidney disease also are in the at-risk category.

Middleton noted that Heart of Kansas "is committed to providing high-quality care to our patients during this public-health crisis. We will continue to ensure access to healthcare in all the communities we serve in central Kansas.

"Our staff members are great; they should be commended," he added. "They are committed to providing whole-person healthcare to all every day. They are simply the best."

In addition to Great Bend, Heart of Kansas clinics are located in Larned and Stafford.

For more information, call 620-792-5700

FREE E-WASTE RECYCLING



Does your *residence* or *business* have *electronics* in need of *safe and responsible recycling*?

Computers & Monitors
Printers
Fax Machines
Laptops
Televisions
Video Game Consoles
DVD Players
VCR's & Cameras
Cell Phones
Telephone Equipment
...and More!

DROP-OFF LOCATIONS

Rosewood
Maintenance Building
2200 Main St., Great Bend
Mon - Fri, 9:00 am - 4:00 pm
Rosewood Bargain Barn
1215 Main St., Great Bend
Mon - Fri, 10:00 am - 6:00 pm

By recycling with us, you benefit your community, the environment, and you help create jobs for individuals with developmental disabilities.

You will receive a tax deduction receipt when you drop off unwanted electronics.

Rosewood ecycle
2200 Main St.
Great Bend
South of the Dairy Queen!



CONTACT INFORMATION
(620) 603-8348
www.RosewoodServices.com

The Mission of Rosewood ecycle is to provide work-related training and employment opportunities to adults with developmental disabilities.

Financing Available



bryant
Heating & Cooling Systems

WHATEVER
IT TAKES.

Comfort Pro Inc.

UPGRADE TO A NEW,
ENERGY-EFFICIENT
BRYANT SYSTEM WITH
\$0 OUT OF POCKET
RATES AS LOW AS 0%

APPLY NOW

WWW.COMFORTPROKS.COM



YOUR FAMILY EYECARE CENTER



Dr. Russell B.
McCaulley



Dr. Chad
Premer



Dr. Nicole
Miller



Dr. Sarah
Stueder

American Family Insurance returning premiums to auto customers in Kansas

*Part of \$200
million in premium
relief for personal
auto customers
nationwide*



American Family Insurance is returning \$200 million to its auto insurance customers following a decrease in driving and accident-claims from the COVID-19 pandemic. The premium relief plan was recently approved by state insurance regulators. Customers will receive payments in the form of a check they can use as they wish.

"As part of the Dodge City, Great Bend and Cimarron communities, I know how the COVID-19 pandemic is impacting our customers and others," said Chris Boys, an American Family Insurance agency owner in Western Kansas "I'm proud to be able to assist customers, who are at the center of everything we do."

The premium relief will come as a one-time full payment of \$50 per vehicle covered by an American Family personal auto policy. The typical American Family household with auto coverage has two vehicles, meaning the average relief check will be \$100.

Payments will be mailed to Kansas customers in the near future and American Family expects to complete the printing and distribution of all checks within 60 days.

Relief payments are based on personal auto policies in force as of March 11, 2020, the date the World Health Organization declared COVID-19 a pandemic.

In addition, the American Family Insurance group, the American Family Dreams Foundation and the Steve Stricker American Family Insurance Foundation will provide more than \$6.8 million to COVID-19 relief and other non-profits, including through a 2-to-1 match for charitable donations given by its agency owners and employees in their local communities.

Customers with questions about this payment can go to www.amfam.com/relief-payment or contact the Chris Boys Agency, 620 225-0800 or 620 792-3643.

Chris Boys has been an American Family Insurance Agent since October of 2005. His offices are located at 2405 Central Ave., Dodge City, KS., 1025 10th St, Great Bend KS., and 701 N Main St., Cimarron KS. He can be reached at 620 225-0800 or cboys@amfam.com.

About American Family Insurance

Based in Madison, Wis., American Family Insurance is a Fortune 500 company and leading insurer, offering auto, homeowners, life, commercial and farm/ranch insurance. Web: www.amfam.com; Facebook: www.facebook.com/amfam; Twitter: www.twitter.com/amfam.

Plenty of goodness remains in America

by Richard Shank

Contrary to what some of the pundits may say, America is a land of benevolent, compassionate and giving people as is evidenced by the Coronavirus (COVID-19) crisis. Actually, this spirit is nothing new to our nation.

In recent memory, church groups have always responded in masses following natural disasters, including tornadoes and hurricanes. In 2001, an entire nation stepped forward to assist in the recovery following the worst terrorist attack in American history.

Journalist Nathan Layne, writing for Reuters News Service said it best: "From celebrities to teachers, from New York to New Mexico, in a week that created waves of anxiety, it also gave rise to acts of kindness."

When word spread that the patriarch of a family in Connecticut was affected with COVID-19, the small town responded by dropping off food and needed medications with several even delivering flowers. According to Layne, when an Atlanta resident posted on a blog her offer to assist the elderly and home-bound, she barely hit the "send" button when a dozen friends and neighbors responded they would volunteer their time to assist.

Author Doris Kearns Goodwin, (a 1999 Dillon Lecturer), in an interview with Time Magazine this past week told how the American spirit in responding to national crises is something that started decades ago, and cited World War II was one such time.

When President Franklin D. Roosevelt, sent an order to increase airplane production by 1000 percent, the nation responded. "Fifty thousand planes in one fell swoop, which would mean we would have an armada next to none and he gets it," Goodwin said. "All sorts of other companies transformed themselves as well. They needed parachutes badly, so manufacturers of silk ribbons made parachutes."

"Toy companies made compasses. Typewriter companies produced rifles and piano factories produced airplane motors," Goodwin continued.

It was interesting to read that a local brewery is transforming its operation from producing the spirits to hand sanitizing products. Arriving home here in Hutchinson the other evening, I was caught off guard when a neighbor I barely know, stopped to ask if he might help in some way.

And, in my old neighborhood where I grew up in Saline County, Walt Harris, at 93, is hunkered down on his farm knowing that better days are soon to come. Crisis is nothing new to Walt as he is part of what became known as "The Greatest Generation" who did it all while winning World War II.

I, for one, have been particularly impressed with the meticulous preparations made by my employer, Hutchinson Regional Medical Center as they leave no stone unturned in preparation for a crisis, the full extent of which remains unknown. As the old expression goes, all hands are on deck as we plan for whatever may come our way.

And, recently, Singer Garth Brooks, during an appearance on Good Morning America, summed up the nation's goal by the often-used phrase. "We're all in this together." No truer statement could be spoken.

RICHARD SHANK IS AN EXTERNAL AFFAIRS REPRESENTATIVE WITH HUTCHINSON REGIONAL HEALTHCARE SYSTEM (shankr@prodigy.net)

1 in 3
PETS WILL BE LOST
WITHOUT I.D. 90% WON'T RETURN

GET THE HOME
AGAIN MICROCHIP

ONLY \$30 ALL THIS
MONTH AT AMC

620-792-1265



Phone: 620-792-5700

1905 19th Street in Great Bend, Kansas

**Family Practice,
Behavioral Health &
Dental Services**

Preventative Care

Prescription Assistance

Diabetes Management

Evening Appointments

Open to Everyone

Bilingual Staff

All Insurance Accepted

Including Medicare, Medicaid & KanCare

"We Care About Your Health"

www.HeartofKansas.com

Knowledge and determination keep Francis Financial in business as a multi generational company



In 1986, John Francis did not let the downturn in the oil industry defeat him. Instead, he saw the need to diversify and followed through. The result is two long-time, successful Great Bend businesses – Francis Financial Services (FFS) and Corrosion DC, both at 1015 McKinley.

“I worked for Francis Casing Crews in several capacities,” Francis recalled about his years at the business his dad acquired in 1973. “I started there after high school graduation. I did jobs on oil drilling rigs, paid the bills, did the payroll – whatever it took to help Dad build the business.”

He later earned his bachelor’s in business at Fort Hays State University with degrees in finance and economics, and a minor in accounting. In 1986 oil prices crashed, and Francis got his insurance license and in 1987 his securities license.

During the 1980s, times were good in the oil patch, but as soon as the crash came, Francis saw people who previously looked wealthy – nice trucks, boats, motorcycles – were soon broke. He set out to help the everyday worker by employing his skills as an investment

representative. “It bothered me to see people not having any savings for their future,” Francis said.

In 1988, Francis, along with his Dad and Jim Adams acquired Corrosion DC from its founder Harvey Fanshier. Francis was elected president and put in charge of running the newly acquired company. “I didn’t know a thing about the cathodic protection business but Harvey was an excellent mentor,” Francis said. “I used to tell customers, ‘Harvey has the knowledge and will to help me learn and I have the determination to work hard.’

“For much of the 90s, I worked in the two oilfield businesses and as a financial representative,” said Francis, investment professional. “The kids were young, we were in debt, so I, along with, Nancy, my wife and the first female partner of Adams, Brown, Beran, and Ball, worked, worked and worked. In time, we added to the teams of all businesses to allow for growth.”

At our peak in 2006, we employed over 60 people in Great Bend, Colby, Garden City and Liberal.

Just as Francis worked with his dad, his daughter, Leslie Francis Klug, works in the family business as a financial advisor. The financial services firm took a leap forward when Rae Ann Brack joined as office manager and customer service representative. She has been in that role for 19 years.

This team is the backbone of the financial services firm that provides a wide range of investment and insurance strategies. These include: individual retirement accounts; college savings plans; small and large business retirement plans, including SEP, Simple IRA, 401(k) and 403(b) plans; pension, profit-sharing and defined-benefit plans; non-retirement investment accounts; life insurance, including all lines of term and permanent insurance; and long-term-care insurance.

“Francis Financial Services has offered investment and retirement solutions for more than 30 years, with personal service as a top priority,” John said. “We provide financial education because it leads to better

decision-making and better outcomes. Leslie and I help many clients as a team. She is much savvier than I at technical analysis, and our clients recognize that our combination of experience and analysis is a valuable proposition.”

John relies on his extensive industry and investment knowledge; Leslie brings her finance and analytical skills to the table. She has been a licensed representative for six years and advances her knowledge of investing. Leslie earned a bachelor’s in accounting and finance from Kanas State University and a master’s in business administration from the University of Denver. She moved back to her hometown in 2013. Leslie obtained her insurance and securities licenses in 2014 and registered investment advisor license in 2016.

Most FFS clients live in Kansas and the Francis family travels to visit annually with as many as possible. Technology allows them to maintain solid relationships with clients in eight states.

No matter where clients live, “it is imperative we get to know them so we can provide sound advice,” John commented. “There are three main questions we ask: What is your timeline? What is your goal? What is your risk tolerance? From there, we listen and learn about clients’ personal and financial situations.”

FFS uses the DARIM approach – Discover, Analyze, Recommend, Implement and Monitor. Each step is crucial to the process and allows Francis Financial to better help clients during their financial lifecycle.

During the current global public-health crisis, clients have asked questions about what they should do.

“We refer back to the three questions we ask about timeline, goals and risk tolerance,” Leslie said. “Clients often say their risk tolerance has changed. Markets go down, they go up. One day alone in March, it rose 10 percent after declining 17 percent last week.

“Reacting to daily news can be costly to long-term objectives. In the long term, the market has provided returns well in excess of inflation. It overcame the crash of 1987, the 2001 terrorist attacks and the recession that followed, and the Great Recession. The market will overcome the COVID-19 crisis too.”

Of course, Leslie added, clients are encouraged to save three to six months of income for emergencies. “This is why we advise that a good long-term plan should contain a short-term plan.”

A big part of the success of FFS is “Great Bend provides a great place to grow our families and businesses,” Leslie commented. “There is a true sense of community and appreciation for personal service.

“Our main source of marketing has been positive word-of-mouth

and referrals from pleased clients; that is the biggest compliment we can receive. It demonstrates that our commitment to clients is paying off; it speaks volumes.”

To further illustrate the far-reaching experience of the Francis family, John spent his childhood and high school years in South America, Texas and Louisiana as his dad worked in the oilfield.

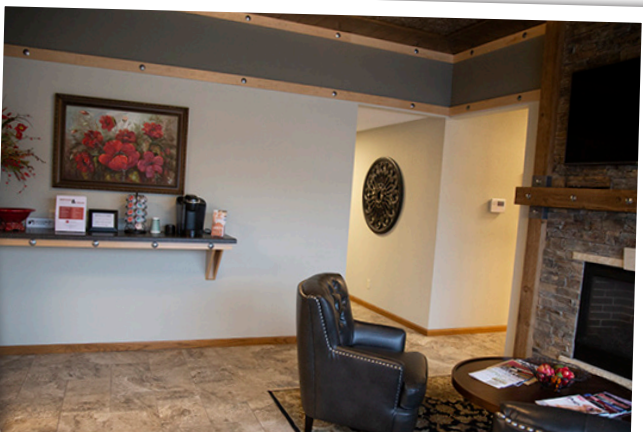
This background played a role in John acquiring Corrosion DC, the oil and gas service company. It installs and maintains cathodic protection systems in Kansas, Colorado, Nebraska, Oklahoma, Texas and Wyoming. Material sales and consulting surveys also are offered.

“We have gained the reputation as being a long-term partner,” said General Manager Nick Klug, Leslie’s husband. “We use state-of-the-art technology and provide on-going service after installation. Corrosion DC has been an industry leader since 1974.”

Cathodic protection: lengthens the economic life of a well; reduces long-term operating costs; provides environmental protection; and reduces overall risk exposure.

“Our unique system is stronger and more durable than others,” Nick noted. “Our team works with customers to provide the best possible service. The staff is exceptionally trained and certified by equipment suppliers and manufacturers unique to the cathodic protection industry.”

Corrosion DC, Inc. believes in “Prevention that Pays.”



Featured Business Profile

Featured Business Profile

WELCOME to Our **NEWEST** Chamber Members

GREAT BEND 2 GO

Kelly DePiesse, Owner
747 East 7th
Russell, KS 67665
(785) 483-8026

kelly@mytown2go.com

Delivery Service

REPERKS COFFEE SHOP

Dennis Crouse, Co-Owner
Rick Riggs, Co-Owner
1216 Main
Great Bend, KS 67530
(620) 786-2334

reperksgb@gmail.com

www.perkscoffeeshop.com

Coffee Shop, Restaurant

WANT TO JOIN THE CHAMBER?

If your company is interested in joining the Great Bend Chamber of Commerce, fill out the online application on our website: www.greatbend.org.

Membership is quick and easy to get started, and it is affordable, too!

You can also sign up to attend one of our Chamber Member Orientation & Marketing Services Seminars. These seminars happen throughout the year, members are encouraged to send at least one team member to get acclimated and stay up-to-date on the free or low-cost marketing opportunities available through the Chamber.

Sign up on our website:

www.greatbend.org/eventregistration

The Greenhouse Delivered

Long before the stay-at-home order, Kelly's Garden Sense has been focused on convenience for clients by bringing the Greenhouse to you—from landscaping, lighting and pottery services it's all available to be brought to the front door of residences and businesses in and around Barton County. Now with increased safety measures in place to keep clients and crews healthy while working at a safe distance, they're encouraging you to stay home and let them bring the POP of Color for your spring and summer landscape to you!

"A beautiful yard, flowers and being outside can make staying home 24/7 more enjoyable," said Kelly Meier-Moeder, owner of Kelly's Garden Sense. "The sun is going to shine and our goal is to make more people happy by bringing flowers and an

ideal landscape to make the most of their outdoor space, all to their front door."

To learn more about the services Kelly's Garden Sense provides for both residential and commercial clients, visit their website, www.KellysGardenSense.com.



Local Creative Art Studio offering Virtual Classes and Demonstrations

The stay at home order is changing the way local businesses do business. It's not just "Business as usual" and that means flexibility and creativity shine when it comes to adapting and helping the community stay home and stay safe.



In an effort to help people stay active and entertained while at home, Dilly & Doc is now offering a weekly Friday Night Live, painting class via their Facebook Page @ Dilly&Doc. A Supply List for each week's class is provided online, or kits are available for purchase for a nominal fee and then delivered or picked-up curbside.

Classes for Friday Night Live kicked off on Friday, April 10 at 7 p.m. and will continue until at least May 1 or until in-person classes can be reinstated at the studio.

"We create experiences at our studio on Main Street," said Phyllis Brack, owner of Dilly & Doc. "While we can sell some projects and kits retail, our business is built around the idea of gathering as a community to create and celebrate."

Dilly & Doc posts a lot of their projects online and has kits geared towards kids to hands-on artistic learning while they are home from school for sale as well.

"We hope that by providing live instruction, with Friday Night Live, we are able to connect with our fans and followers—even beyond Barton County—and encourage everyone to keep creating even while they are asked to stay home for the health of everyone in our community," Brack said.

Private Parties can still be scheduled and hosted online via Zoom which allows the benefit of 2-way communication. Perfect for celebrating birthdays or special occasions at a safe distance, of course. If you're interested in a private party, Dilly & Doc Chalk Paint or purchasing a project to complete at home you can contact Phyllis Brack via their Facebook page or by phone at (620)786-1241.

Sunflower Recycling drop-off site open for self-service

Sunflower Recycling has answered the call from many Barton County residents and re-opened its drop-off site at 5523 10th, Great Bend.



"We have received many calls from Barton County residents, asking if we could re-open our drop-off recycling facility," said Jon Prescott, Sunflower executive director. "We completely understand that our conscientious citizens want to live in a green community even during this difficult public-health crisis."

"Therefore, the facility is now open on a self-service basis. We want to accommodate all recyclers, while protecting customers and staff from the spread of COVID-19."

Shawn Bates, Sunflower production manager, said several containers are placed just outside the large garage door on the west side of the facility. The usual types of materials are accepted, including glass, aluminum, tin cans, newspapers, magazines and cardboard.

"After careful consideration of ways to keep everyone safe, we thought this would be the best solution," Bates said. "We appreciate everyone who recycles and want to make it as easy and convenient as possible during this difficult time."

The containers are available from 8:30 a.m. to 6 p.m. Monday through Friday; Saturday hours are 10 a.m. to 4 p.m. At the end of each day, the materials are collected and moved to the processing plant.

Bates noted that Sunflower's confidential paper-shredding service is available also.

Customers are asked to contact Bates by calling 620-791-7813 before dropping off the paper at the plant near Great Bend Airport. The address is 8823 4th, which is just east of the old Coca-Cola warehouse.

"I want to ensure that I can meet with customers to receive these materials," Bates explained. "They can call on me anytime."

Sunflower, a non-profit agency, serves infants, toddlers and adults with special needs in Barton, Pawnee, Rice, Rush and Stafford counties. Many clients at Sunflower are employed in the wide-ranging recycling operation. Sunflower is in its 54th year.

Experienced Advanced Practice Registered Nurse Joins Pawnee Valley Campus Team

The new advanced practice registered nurse at the hospital in Larned brings to the position 3 decades of experience in family practice, women's health and pediatrics.

Susan Aistrup recently began seeing patients at The University of Kansas Health System Pawnee Valley Campus.

"My many years as a nurse guide me to care for and treat patients of all ages," Aistrup said. "My colleagues and I focus on the health of each individual to ensure they can be as healthy as possible.

"I am committed to listening closely to patients and value each one as an individual," she added. "I strive to explain each medical condition clearly and establish an appropriate plan of treatment acceptable to all parties."

Aistrup was attracted to Pawnee Valley Campus for a number of

reasons, including "the small community setting, friendly staff and this great state-of-the-art facility.

"In addition," she said, "the hospital provides a wide range of services with up-to-date equipment that meets the needs of the



Susan Aistrup, APRN

community. Because of this, patients and families can receive quality healthcare right in their own backyard. Excess travel time is eliminated, reducing stress and decreasing expenses."

Aistrup received her associate's degree in nursing at Dodge City Community College in 1991. She earned her bachelor's degree in nursing in 2000 and her master's in nursing in 2015, both at Fort Hays State University.

The APRN, who is board certified, has many professional affiliations and certificates. She also has

served as a professor of nursing and adjunct clinical instructor at Dodge City Community College

"My passion for this profession continues my belief in lifelong learning, which leads to enhanced knowledge," Aistrup said.

Aistrup is no stranger to the Pawnee County area. She has family in Larned, Rozel and Burdett, and is involved in church and community activities.

Previous employers include Dodge City Medical Center; Marathon Health for Life in Dodge City; Central Care Cancer Center in Garden City; Cancer Center of Kansas in Dodge City; and Hodgeman County Health Center in Jetmore.

Melanie Urban, Pawnee Valley Campus administrator, said she and her colleagues "are excited to have Susan join our team. Since Susan has 3 decades of experience, her patients and their families can be assured of high-quality care."

Barton County we need your help

Chamber members and businesses in Barton County are encouraged to complete this survey, conducted by the Cottonwood Extension District. With support from the Great Bend, Hoisington and Ellinwood Chambers of Commerce, results of the survey will identify needs in our communities. Providing guidance is the K-State Research and Extension and the Community Vitality team.

Please share with other business owners via email or social media.

This survey will end May 22nd.

https://kstate.qualtrics.com/jfe/form/SV_6M5Zo7IEozH2Wfr

Stuck at Home?



It has never been easier to respond to the census on your own. You can respond:



Online



By phone



Or by mail

...all without having to meet a census taker.

Respond today at **2020census.gov**
or call **844-330-2020**

Shape
your future
START HERE

Official Partner
Census
2020

CHAMBER CHAT LIVE!

Sponsored by Nex-tech

Mondays @ 2PM on Facebook & Youtube

HIGHLIGHTED MAY EVENTS IN GREAT BEND

- 1... Dilly & Doc Friday Night LIVE @7PM via Facebook Live
- 1... Friday Night Lights, Great Bend High School Memorial Stadium @9:00PM
- 3... Lake Barton Golf Club-1 Man Scramble @10AM
- 4... Chamber Chat LIVE (Sponsored by Nex-Tech) @ 2PM on Chamber's Facebook Page or YouTube Channel
- 4... Great Bend Public Library, Teen Writing Club Virtual Meeting @4PM
- 5-12... Golden Belt Community Foundation Giving Tuesday, NOW
- 6... Member Services & Marketing Seminar via Zoom @10AM
- 7... Chamber Coffee: Great Bend Zoological Society, Virtual Coffee, Program @9:30am
- 7... Great Bend Public Library, Teen Anime Night @6PM
- 7... Dilly & Doc Bible Journaling @7PM
- 8... Friday Night Lights, Great Bend High School Memorial Stadium @9:00PM
- 10... Mother's Day
- 10... Lake Barton Golf Club-3-Man Scramble @10AM
- 11... Chamber Chat LIVE (Sponsored by Nex-Tech) @ 2PM on Chamber's Facebook Page or YouTube Channel
- 11... Lake Barton Golf Course-Board Meeting @7:30PM
- 14... Tentative Ribbon Cutting: ElderCare Inc., 1121 Washington @9AM
- 14... Chamber Coffee: The Beauty Bar, Virtual Coffee, Program @9:30am
- 14... Dilly & Doc Bible Journaling @7PM
- 15... Friday Night Lights, Great Bend High School Memorial Stadium @9:00PM
- 17... Lake Barton Golf Club-2-Man Low Ball Tournament @10Am
- 18... Chamber Chat LIVE (Sponsored by Nex-Tech) @ 2PM on Chamber's Facebook Page or YouTube Channel
- 19... Open Book Club, Perkins @7PM
- 21... Chamber Coffee: Eagle Radio, Virtual Coffee, Program @9:30am
- 21... Lake Barton Golf Club-Men's Association ABCD Scramble @6PM
- 21... Great Bend Public Library, Teen Anime Night @6PM
- 21... Dilly & Doc Bible Journaling @7PM
- 22...KWECC Turtle Tot Club, Kansas Wetlands Education Center @10AM
- 25...Memorial Day, Chamber Office Closed
- 26...Almost Home's Ask the Expert on KVGB 1590 @8:30AM
- 28... Chamber Coffee: Great Bend Chamber of Commerce, Virtual Coffee, Program @9:30am
- 28... Dilly & Doc Bible Journaling @7PM
- 30...Lake Barton Golf Club-Central Kansas Catbackers 4-Man Scramble Tournament @10AM

Recurring Events:

Great Bend City Council Meetings, 1st & 3rd Mondays, City Hall, 1209 Williams St, 6:30pm

Barton County Commission Meetings, Every Monday, Barton County Courthouse, 1400 Main St, Rm 106, 9am

Visit greatbend.org/events/calendar for a full list of great events taking place throughout the month!

United Way's 2-1-1 can help those in need find resources

During times of uncertainty, Americans come together to support each other. COVID-19 is a new test of our collective strength. As social distancing and self-quarantining become the new normal, we're facing new economic challenges.



To support this rapidly escalating need, United Way Worldwide has created the COVID-19 Community Response and Recovery Fund. This Fund supports communities struggling in the wake of the new virus, by supporting local United Ways and 211, the go-to information resource in times of crisis. Every year, 211 specialists answer 12 million requests by phone, text, chat and email to connect people with disaster, food, housing, utility, health care resources and more. There is no other network in the country with a similar pulse on America's needs. So far, some 20 statewide 211 operations have been activated, and 211 is working closely with health officials all over the country to provide accurate updates to the public.

United Way of Central Kansas and our 22 Community Partners are a part of this network thanks to a partnership with United Way of the Plains, who provides this service for the majority of the State of Kansas.

They can be reached by calling 211, by texting 898211, or visit the website <https://211kansas.bowmansystems.com/>.

While a local fund has not been set up at this time, we are working closely with our Community Partners and other resources in our communities and will keep abreast of this rapidly changing situation. UWCK is working hard to ensure that we are there for our family, friends, and neighbors as we learn to navigate this situation together.

NOTE: You can dial 211 to speak to someone about local assistance at any time. The 1-866-211-9966 number you may have seen on social media is only available for residents of Indianapolis. Please be aware that financial assistance related to COVID-19 is not available for individuals everywhere.

Fuller Industries responds to Shortage Crisis

Fuller Industries is answering the call to provide much-needed supplies across the nation by ramping up production of current products, increasing product offerings and finding unique solutions for PPE shortages.



Fuller Industries has ramped up production on their EPA-approved disinfectants and hand sanitizers in response to global shortages.

"We are currently filling around 10,000 gallons of hand sanitizer every day," Brett Hughes, Vice President of Sales and Marketing said. "We heard from our customers they were needing a variety of sizes. Due to that demand, we decided to roll out hand sanitizer in an 8-oz and one-gallon-sizes, to complement our current offering of dispenser refills."

Truckloads of hand sanitizer are leaving the Fuller Industries' plant heading across the nation.

"We are working two shifts, at least five days a week focusing on fulfilling customer orders across the nation," Mark Chalfant, Chief Executive Officer, said. "But we can't forget about the important community we have right here. We are donating hand sanitizer to the United Way of Central Kansas for distribution to various groups and to the local fire department to help keep them safe on the front lines."

In addition to ramping up production on disinfectants and sanitizers, Fuller Industries is developing ways to meet other shortages.

"We are currently developing an intubation box for surgical teams to protect surgeons and staff while allowing them to perform necessary surgeries. We are working on a device that can dispense one-gallon hand sanitizer containers for mass use at large event centers, airports and more; and our team is currently changing our sewing operation from producing mop heads to producing masks," Chalfant said.

Fuller Industries is a Great-Bend-based manufacturing corporation that specializes in manufacturing commercial cleaning products, custom brushes and plastics. Fuller Industries has a proven track record of quality throughout its 114-year history. For more information, visit Fuller Industries online at www.fullercommercial.com



Barton Community College

offers free CNA courses in Ellsworth with area partners

Those seeking a credential as a Certified Nursing Assistant (CNA) have the chance to enroll in a course at no charge thanks to a generous anonymous donor and a collaboration between Barton Community College, Ellsworth County Medical Center (ECMC) and Good Samaritan Retirement Center.

The two 2020 CNA classes are set for June 1-17 and July 6-22. The classes are 90 hours in length and held over two weeks. Presentations will be held at ECMC and clinical experiences at the Good Samaritan Retirement Center in Ellsworth.

Twenty students will be selected for each class, with additional students added to a wait list. Applications are available at www.ewmed.com.

After selection, applicants must still apply to Barton Community College and successfully pass a reading test prior to enrolling in the CNA class.

Students must be 16 years of age by the first day of class. High School students must have written permission from a guardian and their high school principal to receive college credit.

Students must also pass a reference check, provide immunization records, proof of current health insurance and other requirements that will be communicated to students.

According to the pamphlet promoting the classes, Certified Nursing Assistants (CNA) are certified professionals that provide direct care towards patients in hospitals and long-term care facilities. CNAs assist with tasks including taking vitals, dressing, eating, toileting, bathing and personal hygiene. Becoming a CNA is a chance to begin a long-term career in healthcare and opens the door for a wide variety of work settings. CNAs make a difference in the lives of patients and residents they serve.

Registered Nurse Tami Birkholz is a staff nurse and Education Coordinator at Ellsworth County Medical Center (ECMC) and an adjunct professor at Barton Community College will teach the classes. She holds

a Bachelor of Science in Nursing. Before working at ECMC, Tami worked in a variety of nursing settings including adult care homes and large and small hospitals. Students will find her to be a competent, energetic instructor with a wealth of experience.

"I am thrilled to be teaching the 2020 CNA classes and am hopeful that this year's students will become active in the Ellsworth Medical community."



**DOWNLOAD THE
MEMBER PLUS
MOBILE APP TO
UPDATE YOUR
COMPANY'S
ONLINE PROFILE
ON THE GO**



**Need a Log In?
Contact the Chamber
for more details!
620-792-2401
gbcc@greatbend.org**

Top teachers recognized in USD 428

As education continues in new ways, so do the accolades and recognition. On Monday, April 7, USD 428 announced Jessica Geist, 6th-grade teacher at Lincoln Elementary, and Wendy Popp, math teacher at Great Bend High School, as their 2020 Teachers of the Year.

In the midst of public health concerns, creating the right scenario to bestow this honor presented new challenges in 2020. Trading student applause and recognition for safe space and social distance, the typical classroom surprise was replaced with a fabricated "curriculum meeting" to lure the top teachers to the USD 428 District Office.

"These outstanding educators were both nominated and selected by their peers," said Tricia Reiser, director of teaching and learning at USD 428. "After being nominated, they submitted a local application to be reviewed by past recipients even before we asked them to flex their teaching muscles in light of our State's response to Covid19 and the development of our Continuous Learning Plan. Under any circumstances, both Ms. Geist and Mrs. Popp are exceptional in their dedication, passion, and expertise."

Geist and Popp will advance to the 2021 Kansas Teacher of the Year competition which includes an extensive application process as well as a Regional and State review boards.

"The Kansas Teacher of the Year program is a great way to celebrate our outstanding teachers as well as to elevate their work for recognition among other districts and peers across the state," said Khriston Thexton, superintendent. "These teachers will have ample opportunity for professional growth as they tour schools across the region over the next twelve months, collaborating with the very best teachers across Kansas."

The community is invited to add their applause and congratulatory comments to videos posted on the USD 428 Facebook page and YouTube channel. Questions about the local Kansas Teacher of the Year contest can be directed to the USD 428 District Education Center at 620-793-1500.

Jessica Geist, Elementary Honoree - USD 428 Teacher of the Year

"Our staff at Lincoln Elementary are very proud of Ms. Geist and honored to work along-side her," said Misty Straub, principal at Lincoln Elementary. "She is a professional by all standards, and most importantly



Jessica Geist, sixth-grade teacher at Lincoln Elementary School was named USD 428's 2020 Elementary Teacher of the Year. Geist has taught in Great Bend for five years. Beyond her work in the classroom, students across USD 428 benefit from her leadership in elementary science education and Project Lead the Way curriculum integration.

puts student needs and their learning first. She has formed lasting relationships with students and their families."

Geist earned her Bachelor of Science in Elementary Education from Fort Hays State University and later returned to obtain her Masters in Education Administration. Growing her experience and abilities here in Great Bend, Geist has expanded her professional development through summer training opportunities with Project Lead the Way and has become a leader at the district-level for the implementation of elementary science curriculum. Geist regularly opens her classroom to mentor teachers on everything from classroom management strategies to cooperative learning. Although she would never claim to have all the answers, Geist believes collaboration is important in all aspects of education.

- Continued on Page 17

TOP TEACHERS Continued from Page 16

Geist is a member of the Lincoln Building Leadership Team, the USD 428 Healthy Living Committee, Science Committee, pilot teacher and trainer for PLTW and other curriculum implementation. In her career in USD 428, she has served on countless other committees/teams/task forces.

In speaking of her teaching philosophy, Geist shared, "I want to prepare my students to become the best versions of themselves. I want to give them foundational skills on which to become exceptional and independent learners, as well as kind and responsible members of society."

Geist grew up in Abilene, Kan. and graduated from Abilene High School where both her parents worked as teachers and coaches.

"I played basketball for my mom and ran track for my dad," said Geist. "They are the people I look up to the most and are the main reason I decided to become a teacher and coach."

"In teaching, the 'rewards' are relationships built with your students," said Geist. "And every day I receive countless rewards."

Wendy Popp, Secondary Honoree - USD 428 Teacher of the Year

"Wendy Popp is an excellent choice for our District Secondary Teacher of the Year," said Tim Friess, principal at Great Bend High School. "Wendy is a great classroom teacher as well as a great colleague to work with. I appreciate Wendy and the job that she does here at GBHS."

Popp's teaching career spans thirteen years serving students in Riley County, Junction City, and six years here in Great Bend. Popp earned her Bachelor of Science in Math and Chemistry from Kansas State University and later achieved a Masters in School Counseling K-12 also from KSU. Popp grew up in Prairie View, Kan. and graduated from Logan High School. She is married to John Popp and together they have three children, Jordan, Anna, and Sophie.

Pairing her experience as an educator and a school counselor, Popp shared, "I have the best of two worlds, I get to see students every day in the classroom while still applying my training and experience to create positive relationships with my students."



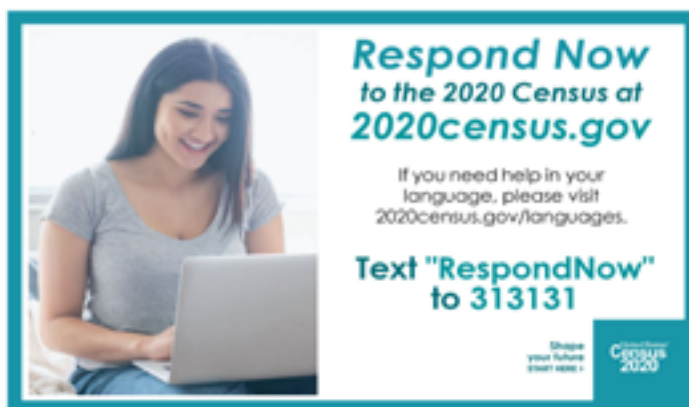
Wendy Popp, math teacher at Great Bend High School was named USD 428's 2020 Secondary Teacher of the Year. Popp's teaching career spans 13 years, six of which have been spent in Great Bend. In the classroom and beyond, Popp applies her training as both a teacher and a school counselor to help students learn.

Popp contributes to several district-wide initiatives, including the Trauma-Informed Committee which is tasked with developing a responsive school culture and practices that support students at every level.

Popp has experienced education in Kansas from a variety of perspectives, from being a student in a 1A school district to teaching in Junction City, a large 6A school.

"I've loved all the variety from 'farm kids' to 'military brats' and everyone in between. I've enjoyed the great state of Kansas,"

"I try my best every day to help students feel safe and valued," said Popp. "Students need to hear that they are talented and can work towards any goal."





CELEBRATING OVER 54 YEARS
OF SERVING PEOPLE WITH
DEVELOPMENTAL DISABILITIES!

There is a Difference.

EARLY EDUCATION
CASE MANAGEMENT
DISABILITY SUPPORTS
RESIDENTIAL ASSISTANCE
COMMUNITY EMPLOYMENT
RECYCLING & MANUFACTURING
GENERAL PUBLIC TRANSPORTATION
& MUCH MORE!

620-792-1325

WWW.SUNFLOWERDIV.COM

VIRTUAL CHAMBER COFFEE SCHEDULE

Every Thursday | Tune in on Facebook | Program at 9:30am

May 07, 2020

GREAT BEND ZOOLOGICAL SOCIETY

The Great Bend Zoological Society is a 501(c)(3) not-for-profit organization dedicated to supporting Great Bend's Brit Spagh Zoo and promoting educational and conservation efforts. Whether raising funds for special projects, helping obtain new animals, volunteering at the Zoo, or just spreading the word that we have a great facility, our Board of Directors and members believe in the importance of our Zoo.

May 14, 2020

BEAUTY BAR

The Beauty Bar Salon is a full service salon for the whole family. Services include hair cuts and colors, blow dry styles, manicures, shellac manicures, pedicures and body waxing. Tune in to learn about their plans to reopen and hear about the many gift items for the Mothers, health professional and graduates in your life.

May 21, 2020

EAGLE COMMUNICATIONS/ EAGLE RADIO

Eagle Communications strives to be the leader in economic revitalization in the rural American communities they serve, dedicated to bringing relevant information, entertainment and business services to the businesses and families therein. They are committed towards enhancing the quality of life by providing services and leveraging partnerships to promote both community and family growth.

May 28, 2020

GREAT BEND CHAMBER OF COMMERCE

The Great Bend Chamber of Commerce will promote and improve the business climate in the city of Great Bend through its services and partnerships that encourage growth and assist existing and new businesses in reaching their business goals.

June 04, 2020

GREAT BEND CHAMBER OF COMMERCE

The Great Bend Chamber of Commerce will promote and improve the business climate in the city of Great Bend through its services and partnerships that encourage growth and assist existing and new businesses in reaching their business goals.

Despite the uncertainty, know there is help!

WE'RE STILL AVAILABLE 24/7!

Parent Helpline 
1-800-CHILDREN



SHOP LOCAL FIRST

Local businesses often do not have the same resources that larger chains do when it comes to financial assistance and recovering from uncertain times like these. When shopping for goods and services, look to our local businesses first.



SHOP LOCAL, ONLINE

Many retailers have websites where you can buy online. If your favorite local retailers don't have an online store, many may be willing to take an order over the phone and have it delivered - it never hurts to ask!



ORDER TO GO

Our local restaurants offer takeout and delivery options. Services like GrubHub and DoorDash also offer delivery services from a wide variety of local restaurants.



STAY SUBSCRIBED

If you have an ongoing subscription or membership with your local Chamber of Commerce, your gym, consider keeping it active - even if you're not going to show up right now. If you own a business with a B2B like a coffee service- keep that active too if you can. Many of these small businesses rely on that regular cash flow to keep things open.



B2B COLLABORATION

If you are a local business owner, take this opportunity to collaborate with your business community to see how you can help one another overcome challenges. Collaborating and understanding the unique challenges of different businesses will lead to solutions that benefit everyone.



TIP A LITTLE EXTRA

If you are financially able to do so, tip a little extra to the restaurants, salons and other service industries you may visit. These service workers may not have the privilege of income security, and a little extra can go a long way.



BUY A GIFT CARD

Unable to shop or dine in right now? Buy a gift card from a local business to give to someone as a "thank you" or use at a later time. For those not wanting to visit in person, many businesses will offer to mail or email you your gift card upon request.



GET SOCIAL, ONLINE

Social media can play a huge role in supporting the local community. Lead by example in encouraging your online following to support local businesses. Tag your posts #OBOpenforBusiness. and we'll do our best to share on our channels, too!



DONATE

The COVID-19 outbreak will undoubtedly present new community challenges for our local non-profits to address. Now is a great time to donate to the causes and organizations you care most about.

KEEPING YOU INFORMED

Sponsored by Nex-Tech

Chamber Chat
LIVE

MONDAYS @ 2PM ON FACEBOOK & YOUTUBE

THURSDAYS @ 9:30 AM
ON FACEBOOK & YOUTUBE



Chamber Coffee
LIVE

Like &
Share

GREAT BEND
CHAMBER OF COMMERCE

MEMBER SERVICES SEMINAR

May 6, 2020 @ 10 am
via ZOOM

Register for Event to Recieve Link

We are **HERE** for you!

YOU'RE INVITED



BUSINESS SUMMIT

Are you interested in collaborating with other local business owners to find creative solutions to help your business thrive?

Great Bend Economic Development is hosting several small group (virtual and in-person opportunities) sessions with individuals from a variety of backgrounds to help you learn from one another.

Individuals from a variety of industries and skillsets will be included so you can learn from other small business owners, marketing professionals, IT gurus and more!

Contact Jessica at jmilsap@gbedinc.com

#GBEDBIZSUMMIT

PHASE ONE

BEGINS MAY 4, 2020 AS DIRECTED BY EXECUTIVE ORDER 20-29



GATHERINGS

- Mass gatherings of no more than **10** individuals allowed.



INDIVIDUALS

- Masks are strongly encouraged in public settings.
- Maintain 6 foot social distance.



EMPLOYERS

- Telework is strongly encouraged when possible.
- Any employee exhibiting symptoms should be required to stay home.



TRAVEL

- Minimize or avoid nonessential travel.
- Follow KDHE travel and quarantine guidelines for travel to high-risk areas.

✗ ACTIVITIES NOT ALLOWED TO OPEN

- Community centers
- Large entertainment venues with capacity of 2,000 +
- Fairs, festivals, parades, & graduations
- Public swimming pools
- Organized sports facilities
- Summer camps

✗ ESTABLISHMENTS NOT ALLOWED TO OPEN

- Bars and nightclubs excluding already operating curbside and carryout services
- Casinos (non-tribal)
- Indoor leisure spaces
- Fitness centers and gyms
- Personal service businesses where close contact cannot be avoided

✓ EDUCATION, ACTIVITIES, & VENUES ALLOWED TO OPERATE

- Childcare facilities
- Libraries

PHASE TWO

BEGINS NO EARLIER THAN MAY 18, 2020

At a date determined by the Governor based on the overall progress of the State on outlined health metrics. The Governor will issue an Executive Order to move the State into this phase.



GATHERINGS

- Mass gatherings of no more than **30** individuals allowed.



INDIVIDUALS

- Masks are strongly encouraged in public settings.
- Maintain 6 foot social distance.



EMPLOYERS

- Telework is strongly encouraged when possible.
- Any employee exhibiting symptoms should be required to stay home.



TRAVEL

- Minimize or avoid nonessential travel.
- Follow KDHE travel and quarantine guidelines for travel to high-risk areas.

✗ ACTIVITIES

NOT ALLOWED TO OPEN

- Large entertainment venues with capacity of 2,000+
- Fairs, festivals, parades, and graduations
- Summer camps



ESTABLISHMENTS ALLOWED TO OPEN

- Bars and nightclubs at 50% total occupancy
- Casinos (non-tribal) if compliant with guidelines approved by the KDHE.



EDUCATION, ACTIVITIES, & VENUES ALLOWED TO OPERATE

- Childcare facilities
- Libraries
- Swimming pools
- Community centers
- Organized sports facilities and tournaments with some exceptions

PHASE THREE

BEGINS NO EARLIER THAN JUNE 1, 2020

At a date determined by the Governor based on the overall progress of the State on outlined health metrics. The Governor will issue an Executive Order to move the State into this phase.



GATHERINGS

- Mass gatherings of no more than **90** individuals allowed.



INDIVIDUALS

- Adhere to personal hygiene guidelines.
- Remain home if you feel sick.



EMPLOYERS

- On-site staffing is unrestricted.



TRAVEL

- Nonessential travel may resume.

BUSINESS AND ACTIVITY RESTRICTIONS

All education, activities, venues and establishments may operate pursuant to mass gathering guidelines.

PHASE OUT

BEGINS NO EARLIER THAN JUNE 15, 2020

At a date determined by the Governor based on the overall progress of the State on outlined health metrics. The Governor will issue an Executive Order to move the State into this phase.



GATHERINGS

- Maintain social distance where applicable.



INDIVIDUALS

- Adhere to personal hygiene guidelines.
- Remain home if you feel sick.



EMPLOYERS

- Follow any additional guidance for businesses and employees that is released.



TRAVEL

- Unrestricted.