



OUTLOOK BUSINESS JOURNAL

A MONTHLY PUBLICATION OF THE GREAT BEND CHAMBER OF COMMERCE AND ECONOMIC DEVELOPMENT



Barton Community College Celebrates Grand Re-Opening of Camp Aldrich



Construction on the new Camp Aldrich Dining and Events Center has been completed and the public was invited to celebrate the facility's completion and Grand Re-Opening and Ribbon Cutting from 5:30-7:30 p.m. March 31. The after-hours event was in conjunction with the Great Bend, Hoisington and Ellinwood chambers of commerce and Claflin Area Pride. The event featured free hotdogs and hamburgers with sides provided by Great Western Dining catering service and drinks provided by the Barton Foundation.

The original building caught fire in April of 2014. The popular local wedding and event venue was storied with major life events for countless area residents, which meant the loss was tragic for many. However, the opportunity to provide a bigger, better facility was recognized and Barton Community College brought this vision to fruition.

The new facility, which is constructed completely from fire-resistant materials, is 25 percent larger upstairs with a capacity of 300. The lower level can seat 100, which is twice as large as the previous facility's basement. A large outdoor patio space has been added. High-efficiency heating and cooling systems have been installed as well as ADA compliance upgrades like an elevator and ramp. It features an expanded fully equipped industrial kitchen.

Several individuals and organizations donated funds to go above and beyond what insurance would cover for the \$2.5 million project. Bob Dole donated \$20,000 and Kans for Kids Fighting Cancer Foundation, Inc. raised \$317,000 by selling tax credits. Both donations were made with Camp Hope in mind, expanding the size of the facility and customizing amenities to accommodate the children's needs.



BUSINESS I.T. SOLUTIONS

YOUR TRUSTED TECHNOLOGY PARTNER

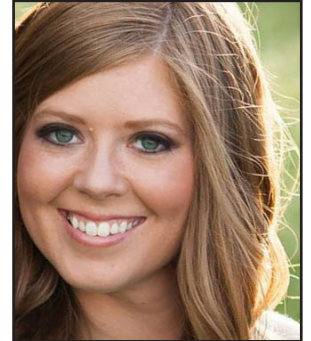


NEX-TECH.COM/BUSINESS

3700 10th St. • 792.3908

Ambassador Profile - Amy Habiger

The Ambassador Club is made up of 30 men and women from the Great Bend business community who represent the Chamber in a number of ways. They host the weekly Chamber Coffees, attend Business After Hours and Ribbon Cuttings, serve on Chamber committees, and assist with member recruitment and retention efforts. To find out more, contact us, 620-792-2401 or abauer@greatbend.org.



Where I Work

As General Manager of Yours Truly Gifts, Events & Floral, I am involved in ordering inventory, bookkeeping, marketing, work with private event planning clients and venue management clients. My previous experience in corporate event planning, facility management and floral design has given me the knowledge and enthusiasm to run a successful business.

Educational Background

After graduating from Great Bend High School, I earned a Bachelor of Business Administration from Texas Lutheran University in Seguin, Texas and am a Certified Wedding Planner.

My Family

I have been married to my husband, Mike, for 2.5 years. We live on a family farm with our dog, Tex.

As an Ambassador

I am in my second year as an Ambassador. As a small business owner, I know that running a business is hard enough. As an Ambassador, I enjoy making the connection with other local businesses and reminding them of the resources and support the Chamber has to offer.

Hobbies & Interesting Facts

I truly enjoy building and running a small business in the community I grew up in. I am lucky enough to work closely with family members, which makes the days, feel like a vacation.



Local Author Rises To The Top Of The Best Sellers List

Local author and Chamber member Darcy Leech released her first book, *From My Mother: Surviving and Thriving in a Family Ravaged by Genetic Disease* on March 29th. *From My Mother* is currently the #1 New Release in Genetic Health worldwide on Amazon and even hit the #1 Best Seller spot in Genetic Health. You can get your copy today at Everything Under the Sun in Great Bend or at many online retailers.

RSVP Sells Memorial Day Flowers

Memorial Day Flowers will be on sale through the month of May with proceeds going to volunteer recognition programs for RSVP and Volunteers In Action. These recycled flowers look brand new and are perfect for your budget. For more information, stop by RSVP's office, 1025 Main Room D114 or call 620-792-1614

 **Great Bend**
REGIONAL HOSPITAL
A Physician Owned Hospital

JOIN US FOR
Ladies Night

Thursday, May 5th
6-8 PM • West Entrance

Taco Bar & Margaritas
Free Chair Massages
Freebies & Door Prizes
Luxury Spa Day Giveaway

Learn More on Facebook!

Clara Barton Hospital Foundation to Host 23rd Annual Golf Tournament, Dinner, and Auction Friday, June 17, 2016

The 23rd Annual Benefit Golf Tournament, Dinner, and Auction will be an Expedition of fun this year! The Hospital Foundation celebrates all the journeys to bigger and better things that have been explored in the past year, and in the history of Clara Barton Hospital.

The golf tournament will feature a four-man scramble at Lake Barton Golf Course, with tee times beginning at 8 a.m. through 12:50 p.m. Cost to enter the tournament is \$90 per player or \$360 per team. Registration includes green fees, golf cart rental, lunch on the course (sponsored by QS Nurses Kansas), a player gift, and a ticket to the dinner and auction later that evening. However, dinner tickets are limited, so golfers interested in attending the dinner and auction should register before May 31st. Prizes will be awarded to the top three teams in two flights. The registration deadline is Monday, June 13. Please see the flyer insert or go to www.clarabartonhospital.com to register.

The memorable Hole-In-One Contest will offer golfers five chances to win \$1,000 thanks to Manweiler Chevrolet Co. Other contests include a chipping contest, longest drive, longest putt, closest to the hole, and straightest shot for both men's and women's divisions, sponsored by First Kansas Bank and Cardinal Pharmacy. Prizes for each flight will be awarded, as well as last place prizes! This year's tournament will also include an exciting new contest on the course!

The benefit dinner sponsored by Landmark National Bank, Nex-Tech and Nex-Tech Wireless, will be held at the Knights of Columbus Hall in Hoisington with doors opening at 6 p.m. Tickets for this year's "Trail to New Horizons, An Expedition with Clara Barton" dinner are \$20.00 per person and must be secured in advance. The evening will include the golf tournament awards ceremony and silent and live auction. Auction items range from trips to Branson, to gift baskets, a KSU football autographed by Bill Snyder, and a KU basketball autographed by the KU basketball team. The traveling longhorn horns will again be part of the auction this year.

Anyone interested in volunteering, registering, or supporting the event should contact the Foundation at (620) 653-5012 or foundation@clarabarton.hpm.in.com. For more information and a complete listing of sponsors, see the flyer insert or go to www.clarabartonhospital.com/foundation.

SAVE THE DATE



Relay for Life

2016

Friday, June 10 at
Hoisington Recreation Center
1200 Susank Rd * Hoisington, KS
6 pm to 2 am

For more information:
Contact Mariann Shook at 620-791-7549
or relaynana62653@gmail.com
Find us on FACEBOOK: Relay For Life of Barton County

Cancer: not here, not there, not anywhere



Outlook Business Journal
A monthly publication of the



1125 Williams,
Great Bend, KS 67530
Phone: 620-792-2401
Fax: 620-792-2404

Web address: www.greatbend.org

EXECUTIVE COMMITTEE

Chairman
Dennis Neeland, Great Bend Co-op Association

Vice Chairman
Paul Snapp, First Kansas Bank

2nd Vice Chairman
Great Bend Regional Hospital

Immediate Past Chairman
Kenny Vink, Office Products Inc.

Treasurer
Alan Burton, MPIRE Properties

BOARD OF DIRECTORS

Aaron Andrews
Coldwell Banker Sell Real Estate

Linda Bonewell
Fuller Industries, LLC

Taylor Calcara
Watkins Calcara, Chtd.

AJ Chrest
Aflac District Coordinator / Ambassador Club

Matt Dykes
Epoxy Poly, Inc.

Rebecca Ford
Catholic Charities of SW Kansas

Megan Hammeke
GBRC / Barton County Young Professionals

Kevin Keller
Keller Real Estate & Insurance Agency

Brandon Lawellin
Sutherlands

Rodrigo Razo
Playa Azul Mexican Restaurant

Leilani Schenkel, RN
Almost Home, Inc.

Aaron Spanier
Innovative Livestock Services

Marty Steinert
Dove Buick Chevrolet Cadillac

Nancy Sundahl
Mary Kay Cosmetics

EX-OFFICIO

Dr. Carl Heilman, Barton Community College

Vicki Berryman, Great Bend City Council

Brad Reed, USD #428

Jennifer Schartz, Barton County Commission

CHAMBER STAFF

Jan Peters, President/CEO
jpeters@greatbend.org

Andrea Bauer, Director of Sales & Member Services
abauer@greatbend.org

Maddi Kinkelaar, Marketing Coordinator
marketing@greatbend.org

Roxanne Rich, Office/Business Manager
rrich@greatbend.org

Melissa Hinton, Project Specialist
projects@greatbend.org

CONCRETE SERVICE

221 Baker St.
Great Bend, KS 67530

For ALL Your
CONCRETE CONSTRUCTION
Needs!



Call Kyle Walter for an Estimate!

Office: 620-792-2558

Mobile: 620-639-1026

CoMfortPro Inc.

- Heating & Air Conditioning
- Plumbing
- Certified Radon Testing

Furnaces
Perform 90%
+ Efficiency



bryant
Heating & Cooling Systems

Satisfaction
Guaranteed!

Locally Owned
& Operated

Great Bend: 620-793-4208

Larned: 620-285-3966

Toll Free: 800-937-3030

Grand Opening Set For New Sunflower Diversified Westside Market

The newest venture at Sunflower Diversified Services combines two of the non-profit agency's priorities – employment for people with developmental disabilities and delays, and more opportunities for the community. Sunflower Diversified Westside Market, 5523 10th, opened at the first of the month with the list of products growing day by day. A grand opening celebration was held Saturday, April 23 at the facility, which also is the Sunflower Recycling drop-off site.



Activities included free tastings of products, prizes and a live KHOK radio remote. In addition, Andi Dale introduced her pasture-raised and free-range meat products, while grilling up some samples. Diane Ramos is the Westside Market manager, and Sunflower clients are working in maintenance, inventory, product stocking, cleaning and sales. "Sunflower's clients also will be developing and producing products for sale," noted Sarah Krom, Sunflower community supports coordinator. "And we are including outdoor space for a farmer's market for folks who have garden produce for sale."

The inventory includes a wide variety of products made locally and throughout Kansas. It includes:

- Yoder statuary
- Heartland Farms yarns and other items
- Handmade soaps
- Salsa and spreads canned the old-fashioned way
- Frozen beef, pork and chicken
- Fresh meat sticks and sausages
- Old-fashioned candy
- Gourmet food mixes
- Bird feeders
- Reusable bottles and recycling bins
- Specialty pet treats
- Earth-message T-shirts

"New product lines are being developed every day," Krom said, noting arts-and-crafts items will be accepted on consignment. "We also will have floor mats and other products that Sunflower clients create." Ladeska "Decky" Makings, Sunflower's chief operating officer, has been working side-by-side with Krom and other colleagues to get this project up and running. "As with all our business ventures, our primary objective is to provide even more employment options for the people we serve," Makings said. "Our clients can increase their earning potential and enhance their marketable skills."

"At the same time," Makings continued, "our neighbors can purchase products made locally and throughout our state. Sales of these unique items support people who need a helping hand; and the domino effect results in more consumer spending, which helps us all." Regular hours are 10:00 a.m. to 6:00 p.m. weekdays, and 9:00 a.m. to 1:00 p.m. Saturdays.



MAY CALENDAR OF EVENTS

View & post all your community events at www.greatbend.org/!

Wednesday, May 4th

KCAC Tournament, Great Bend Sports Complex, 41 McKinley St, 1:00 p.m.

Thursday, May 5th

Ladies Night at Great Bend Regional Hospital, Imaging Lobby (west side), 514 Cleveland St, 6:00 – 8:00 p.m.

KCAC Tournament, Great Bend Sports Complex, 41 McKinley St, 1:00 p.m.

Friday, May 6th

Leadercast - "Architects of Tomorrow", First Christian Church, 5230 Broadway Ave, 8:00 a.m. – 4:00 p.m.

Art & Wine Walk, 1209 Williams, 4:00 – 7:00 p.m.

KCAC Tournament, Great Bend Sports Complex, 41 McKinley St, 1:00 p.m.

Saturday, May 7th

Birthing Class at Great Bend Regional Hospital, ER Lobby, 514 Cleveland St, 9:00 a.m. – 3:30 p.m.

Mother/Daughter Brunch, Elks Lodge, 1120 Kansas St, 10:00 a.m.

Wednesday, May 11th

Technology Roundtable - "Employee Users & Security Update", Great Bend Chamber of Commerce & Economic Development, Spray-Holt Family Board Room, 1125 Williams, 11:30 a.m. – 1:00 p.m.

Saturday, May 14th

Open Farm Day, Heartland Farms, 1049 CR 390, Pawnee Rock, 10:00 a.m. – 3:00 p.m.

Toad Abode: Youth art workshop, Shafer Art Gallery, 245 NE 30 Rd, 9:00 – 11:00 a.m.

Friday, May 20th

Frogs: Sounding the Future-Exhibit Reception, Shafer Art Gallery, 245 NE 30 Rd, 6:00 – 8:00 p.m.

Saturday, May 21st

St. Rose Health Center Blood Screening, St. Rose Health Center, 3515 Broadway Ave, 6:30 – 9:00 a.m.

Thursday, May 26th

KSHSAA Tournament, Great Bend Sports Complex, 41 McKinley, All Day Event

Friday, May 27th

KSHSAA Tournament, Great Bend Sports Complex, 41 McKinley, All Day Event

RECURRING EVENTS

GBPL Teen Movie Monday, Great Bend Public Library, 1409 Williams, 4:00 p.m.

Barton County Commission Meetings, Mondays, Barton County Courthouse, 1400 Main Room 106, 9:00 a.m.

Great Bend City Council Meetings, 1st & 3rd Monday of the month, 1209 Williams, 7:30 p.m.

American Legion Bingo, Tuesdays & Thursdays, 1011 Kansas Ave., 7:00 p.m.

Dinner Served at American Legion, Fridays, 1011 Kansas Ave., 6:00 p.m.

Baby and Me, Great Bend Public Library, 1409 Williams, Tuesdays 10:00-11:00 a.m.

Story Time, Great Bend Public Library, 1409 Williams, Tuesdays 11:00 a.m.

GBPL Free Friday Movie, Great Bend Public Library, 1409 Williams, 4:00 p.m.

Welcome to Our Newest Chamber Members

Professional Engineering Consultants, P.A.

303 S. Topeka
Wichita, KS 67202
316-262-2691

www.pec1.com

Josh Golka, Civil Engineer
Engineers

Lindy's Pest Control

PO Box 1254
Great Bend, KS 67530
620-791-7748

Lindy Nelson, Owner
Pest Control



FRIDAY, JUNE 3

- Free Movie in the Park!
- Car Show & Gathering
- Summer Street Stroll Kickoff
- Fire & Police Chief Badge Hunt
- Great Bend BOOM Baseball
- Lucas Oil Races at SRCA Dragstrip

SATURDAY, JUNE 4

- Outdoor Vendor Fair
- Live Music & Entertainment
- Free Jumbo Yard Games
- Jumbo Business Monopoly
- Renaissance Faire on North Side
- PoGo Fred Performance
- Relay For Life Kids Zone

SATURDAY CONTINUED

- John Jacob Car Show Pit Stop
- Disc Golf Tournament
- Great Bend Business Olympics
- Community Beer Garden
- HAP Dumont Baseball Tourny
- Free Wine Tastings
- Sales & Discounts in Stores

SUNDAY, JUNE 5

- United Way Community BBQ at Vets Park
- Sand Volleyball Tournament
- Renaissance Faire on North Side
- Fire & Police Chief Badge Hunt

For Full Schedule of Events or More Information
Call Great Bend City Office 793-4111 or greatbendks.net
Like us on Facebook at Explore Great Bend!

For a complete list of community events, visit our web site:

www.greatbend.org

If you would like to submit an event to be published in the print or online calendars, post it from our Events Calendar at www.greatbend.org. Be sure to include a title, description, date, times, location, and contact person.

DMA Architects, PA

Local Architect Dreams BIG in Great Bend

When Don Marrs was a youngster living on a farm near Longford, Ks., he may not have realized he was sowing the seeds of his life-long career as an architect. Marrs was learning some basics of the trade by watching his grandfather, who was a carpenter and builder.

Marrs said this early education played a big role in his becoming the principal/owner of DMA Architects, P.A., which he started in 1981 at Salina. The Great Bend office is located at 1420 Roosevelt, which is the family home of his wife, Mona Guesnier Marrs.

“My grandfather repaired and built farm structures and constructed a church for the community,” Marrs said. “My father died in a truck accident when I was 13 months old so I spent a lot of time with my grandfather.” These experiences, along with industrial-arts classes in high school combined to further spark Marrs’ interest in the drafting and drawing aspects of architecture.

“When I entered college, I set my goal to become an architect,” he remembered, noting he earned his bachelor’s in architecture at Kansas State University in 1976. “I have never waived from that goal, and more than 45 years later I still have fun every day being an architect. “We work with clients to guide them through the decision-making process, preliminary and final designs, drawings and builder selections,” Marrs noted. “Our focus is on high-quality projects for government, civic and non-profit organizations.”

One of those projects is the new Camp Aldrich facility, which replaced the building that was destroyed by fire. It is one of several Barton Community College projects supported by DMA Architects since 2010. When discussing the strengths and challenges of the Camp Aldrich project, Marrs noted that the facility’s location fit into both categories. “The strength of the location is its prairie setting with natural rolling sand hills and landscape,” he said. “The challenge of its location was building a structure that meets building codes for fire-alarm and fire-sprinkler systems.



Donnie Marrs, Owner

“This was a big challenge because there was no water supply to support the sprinkler system,” he explained. “So we included a water supply, which we placed underground so that it didn’t distract from the site. The fire alarm needed telephone service, which required a special connection method and approval of the State Fire Marshal.” The new Camp Aldrich facility is larger, and improvements were made in the kitchen, convention space and in the lower level that doubles as a storm shelter.

Camp Hope, the annual event for children who have had or do have cancer, was also involved in the planning. “The facility will support the campers’ needs and is completely handicapped accessible,” Marrs said. “There are ramped sidewalks and an elevator.” While Camp Aldrich may be the most recent local project, DMA Architects has completed many others here. They include First Kansas Bank at 10th and McKinley; the entry to St. Rose Church; new CHS service facility and office building; Great Bend Housing Authority renovations; Great Bend Events Center renovations; and Red Barn’s new warehouse and distribution center.

Marrs’ colleagues at DMA are Project Architect Michael McCall, Project Manager Justin May and Office Manager Linda Woodfield. DMA is recruiting architects who want to join the DMA team; the company would like to staff a Great Bend office full-time.

“We have a collaborative work environment and when we find a good match with the client, everyone wins,” Marrs said, noting DMA is involved in 30-40 projects at any given time. “We enjoy a repeat-client base, which illustrates to prospective clients they can trust that the designs we produce are a complete reflection of their input. “The strength of our firm is derived from the constant effort to give our full attention to our clients,” he added. “It is this sensitivity to their needs that allows us to produce quality design solutions for a wide range of projects.”

DMA project categories are commercial, religious, residential and institutional. Even though learning at the knee of his grandfather was the first architectural spark of interest, Marrs also credits Jack Bowman, former BCC track coach, for offering encouragement. “Great Bend is where I got my start in higher education because of Coach Bowman’s persistence,” Marrs commented. “Coach Bowman got me to come to Great Bend from Clifton, Ks., when I was 17 years old. I met my wife in Great Bend and now we are living and working in the community. I want to help make Great Bend’s future successful.”





Phone: **620-792-5700**
1905 19th Street in Great Bend, Kansas

Family Practice & Mental Health Services

Preventative Care
Prescription Assistance
Diabetes Management
Evening Appointments
Open to Everyone
Bilingual Staff
All Insurance Accepted
Including Medicare, Medicaid & KanCare

"We Care About Your Health"

www.HeartofKansas.com

BCYP Represented At Annual Kansas YP Summit

On March 19, the networking group gathered for the 4th Annual YP Casino Night at the Knights of Columbus Hall. In addition to dinner, a photo booth, casino games, and lots of prize giveaways, the semi-formal function also includes a program where representatives from the Chamber of Commerce & Economic Development, City of Great Bend, and the Young Professionals group provide motivational words for the crowd of professionals. Speakers included YP Steering Committee Chair Regan Reif, Chamber Board Chair Dennis Neeland, and Next Gen Leader of the Year Matt Hiss. Cole Reif with Eagle Radio served as emcee.



Party goers enjoyed Casino Games and Dinner at the 4th Annual BCYP Casino Night.

During the month of April, the Young Professionals Steering committee worked hard to finalize plans to help update the Born Learning Trail at the Brit Spaugh Zoo in partnership with Central Kansas United Way. Unfortunately, due to weather issues this event was postponed. The community impact team is working in conjunction with the steering committee and the Brit Spaugh Zoo to determine another possible date for this project.

On Friday, April 22 Barton County Young Professionals Chair, Regan Reif and past Chair and current Community Impact team member Brandon Steinert attended and presented at the annual Kansas YP Summit a daylong, statewide event designed for young professionals who are interested in professional development. The 2016 Kansas YP Summit was held in Wichita for the first time since the event started in 2011. The theme of the 7th Summit was "Taking Flight and Changing Tomorrow."

The Barton County Young Professionals group has three main goals: Lead. Network. Volunteer. The group is free to join, and is open to anyone between the ages of 21 and 40 that lives or works in the Barton County area. For more information, visit www.bartonyyp.com and like the group's page on Facebook. BCYP is a program of the Great Bend Chamber of Commerce & Economic Development.



NOW OPEN!

at the GBRC Activity Center
2715 18th Street



Great Bend Recreation Commission
620-793-3755
GreatBendRec.net

T&C MFG & Operating, Inc. Celebrating 20 Years Of Business

Craig A. Pangburn and Thomas H. McGlinn, who together have over 60 years of experience and service in Manufacturing and Environmental Consulting, established T&C MFG & Operating, Inc. (T&C) in 1996. Tom and Craig seized the opportunity to buy a portion of an existing business, Rice Engineering.

Tom had been a Rice Engineering employee for 42 years, starting at the plant and working his way up to the Controller position and Craig had 12 years of experience as a Field Supervisor. When they purchased the company, they brought four of T&C's current employees with them. Jim Thorson had been with Rice for 12 years, working on extruding rubber at the manufacturing plant, Louie Degenhardt had 20 years of experience with Rice as a rimmer of rubber products and a roustabout. Dennis Smith came with 27 years of experience lining tubing, roustabout and billing accountant and Mike Davis worked for Rice for three years wrapping liners and a roustabout. Additional experience includes the mold designer for T&C, Larry Degenhardt, who had 32 years as a welder and machinist with Rice. Three of the employees are still employed by T&C and one retired in 2015. As they formed their new business, Tom and Craig, felt they could lend the expertise, knowledge and desire to develop the business into something profitable and expansive.



T&C began their business with 12 employees and rapidly grew to 25 fulltime and numerous part-time employees. In order to serve the ever-changing economy, T&C diversified the business into two divisions. The remainder of the employees average 10 years at T&C, proving what a fabulous place it is to work. Sadly, Tom passed away October 24, 2015.

The Environmental Consulting Division is engaged in the engineering, design, installation and operation of produced saltwater disposal systems, as well as the design and completion of deep Class I & Class II Disposal Wells. They also consulting work related to the design, drilling, completion and permit application process of Class I, II, III, V and Hydrocarbon Underground Storage Wells. T&C also has an interest in JAS Equipment Rental and Underground Cavern Stabilization, LLC.

Located at 457 East Hwy 56 in Great Bend, the Custom Rubber Molding Division specializes in manufacturing products for the irrigation, agriculture, commercial, industrial, medical and wastewater markets utilizing compression, injection and transfer molding processes. To tour the plant, please call 620-792-2791 to schedule a time.

Please visit our website at www.tcmfg.com

Jose Renteria, APRN, Joins Staff at St. Rose Health Center



Jose Renteria is not only bringing his medical skills and experience to St. Rose Health Center, he also speaks Spanish fluently. Renteria, the new St. Rose bilingual advanced practice registered nurse, graduated from the Acute Care Nurse Practitioner Program at Wichita State University. "In this acute care program, my clinical rotations included more than 800 hours of study in a wide range of specialties," Renteria said. "Some examples are pulmonology, internal medicine, general surgery and emergency care.

"I wanted to enhance my education so that I would be able to do more for my patients," he added. His fluency in Spanish adds another layer to his ability to offer care and treatment to some patients, he noted. "Communication is the key to what we do," Renteria commented. "Our diagnoses are based in large part on physical exams and medical histories. And communicating clearly with a patient is fundamental as we gather this information."

When Renteria recently visited with the USD 428 Migrant Parenting Advisory Council, his main goal was to discuss the wide range of St. Rose services. "I wanted to give the audience information about the many opportunities here at St. Rose," Renteria said. "This is a great organization in many respects – from personnel to services to state-of-the-art equipment. Everything is top-of-the-line. The leadership team knows what it is doing."

Renteria was born in California and grew up in Durango, Mexico. He moved back to the United States after high school and has lived in Great Bend about 14 years. He is married to Alma Renteria. After earning an associate's of science degree in nursing at Barton Community College, he graduated from Fort Hays State University with a bachelor's in nursing in 2011. Graduation from WSU's acute care program came three years later.

Meet Our Veterinarians

DR. MATT FEHR

Expert in Animal Chiropractic & Acupuncture
Dave Ramsey Entrepreneurship Graduate
Boy Scouts Leader & Shriner Member



ANIMAL MEDICAL CENTER

Great Bend (620) 792-1265
& Ellinwood (620) 564-3009

Great Bend Regional Hospital Announces Hiring Of A New CEO, Kerry Noble

On Monday, April 4th the board of directors for Great Bend Regional Hospital received the resignation of its Chief Executive Officer, Brent Hanson. He and his family will be moving to Houston, Texas where he has accepted a position as CEO for another healthcare facility.

Kerry Noble, an experienced hospital administration professional, has been appointed the new CEO for Great Bend Regional Hospital. Noble has more than 40 years' experience in the financial management and healthcare industries, including 30 years as CEO for various proprietary, public, and physician-owned hospitals across the Midwest.



"I have been working alongside Great Bend Regional Hospital since 2011 on several projects," Noble says. "With the help of the leadership team at the hospital, I am looking forward to enhancing our operations and facilitating growth opportunities in the future."

Noble earned a Bachelor of Science in Business Administration and a Master of Business Administration from Arkansas State University, and is a member of the American College of Healthcare Executives. He and his wife, Anna, of 45 years have two adult children and four grandchildren.

FMI Adds Rondeau, Teichman To Board

Farmers Mutual Insurance, headquartered in Ellinwood, has elected Mark Rondeau of Great Bend and Ruth Teichman of Stafford to their Board of Directors. "Our Board of Directors, over the past couple of years, has worked very hard to put together a board with varied business backgrounds with an eye towards the future," said Justin Lear, CEO of FMI. "We searched out candidates that are an excellent fit for the board." "With the experience and knowledge they bring to aid the leadership and our goals, they will be excellent additions," he said.

Rondeau, born and raised in Great Bend, was the oldest son among seven children. Graduating from Great Bend High School in 1972, he graduated with a Juris Doctorate from Washburn University Law School in 1979. He entered the U.S. Air Force where he served for four years as an Assistant Staff Judge Advocate and an Area Defense Counsel. Rondeau has been active in community including serving as a past school board member, and has been on the Board of Directors for the Chamber of Commerce, Boys Home and the Great Bend Housing Authority.

Teichman served for 12 years in the Kansas State Senate, serving on and chairing several committees. She served as a school board member for the Stafford School District for 20 years and was president for 9 years. She was President of the Kansas Association of School Boards in 1999. She has a Bachelor of Science degree from Kansas State University. Teichman has served on many boards including the Kansas Foundation for Managed Care of Substance Abuse, founding member- South Central Community Foundation, founding and current member - Stafford Educational Foundation, Prairie Bank of Kansas, Kansas Agriculture Rural Leadership, Stafford County Hospital, Ninnescan Rural Electric, Delta Dental of KS, Filley Art Museum Foundation - Pratt, and the KU Geological Survey Advisory Committee.

Other Directors of FMI are: Richard F. Kimple (President), Herman Hartig Jr. (Vice-President), Ronald G. Rugan (Secretary/Treasurer), Larry Dannebohm (Asst. Sec./Treas.), Edward Schloctermeier (Director), Melvin Waite (Director), and James Harris (Director).



Returning to the
Great Bend Expo Complex...



April 5-7, 2017

www.greatbendfarmandranchexpo.net

April 5th 9 a.m. to 5 p.m.

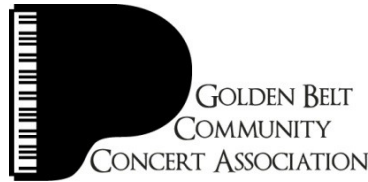
April 6th 9 a.m. to 7 p.m.

April 7th 9 a.m. to 4 p.m.

**Reserve your exhibitor
space today!**



Golden Belt Community Concert Season Schedule Announced “The Magic of Music”



Community Concert Association's 2016-17 Season:

(All concerts are held at the Great Bend Municipal Auditorium, Lakin and Stone.)

Equinox Little Big Band	Monday, September 19, 2016 – 7:30 p.m.
David Burnham's Broadway	Saturday, October 1, 2016 – 7:30 p.m.
The Blackwood Brothers Quartet	Saturday, October 15, 2016 – 7:30 p.m.
Next Generation Leahy	Tuesday, November 15, 2016 – 7:30 p.m.
Alina Kiryayeva	Saturday, January 28, 2017 – 7:30 p.m.
All-American Boys Chorus	Thursday, March 16, 2017 – 7:30 p.m.

Anyone who is not a current member, but wishes to purchase a membership, may contact Linda Jerke, 620-793-9440, to have their name placed on a waiting list.

John Jaco Insurance & Financial Services Celebrates 50th Anniversary

John Jaco Insurance & Financial Services has been an iconic business in this community for 50 years. It started in 1966 when John Jaco Sr. bought a partnership in an insurance and real estate agency. John later bought out the partner, and established a very successful agency.



Along the way, John Sr. has served as President of Great Bend Board of Realtors, President of Barton County Association of Independent Insurance Agents, Voted Realtor of the Year, & served as Chairman on numerous Community committees. John also served as director of crime stoppers & helped to bring them to the Barton Co. area.

Staff includes John Jaco SR. president, J.W. Jaco Executive V.P of operations, two full time insurance agents, Barbara Wolford Sec.-Tres., & Ronda Krier producer, Sarah Schwartz, Administrative Assistant to J.W. Jaco, Frank Koelsch Realtor Associate. They are here to help you with all your insurance, financial, and real estate needs.

We would like to invite the community to our 50th anniversary celebration on June 4, 2016. We will have the Nationwide #88 Dale Jr. Show Car & simulator at our office at 820 Main Great Bend, Ks. Along with prizes and giveaways the Grand prize drawing will be for the chance to win tickets to a Nascar Race at Texas Motor Speedway!

Chamber Radio Show



Tune in to KVGB 1590 AM on the first Thursday of every month to hear Eagle Radio's Patrick Burnett discuss the latest Chamber happenings with Marketing Coordinator Maddi Kinkelaar. This month's show will air on Thursday, May 5th at 11:35 a.m.



Quarterly Technology Roundtable Luncheon

Wednesday, May 11th
Spray-Holt Family Board Room,
Chamber Office, 1125 Williams
11:30 a.m. Lunch | 11:45 a.m. Discussion
| 1 p.m. Dismissal

“Employee Users & Security - Spyware / Ransomware Update”

\$15 Per Person - Includes Lunch,
Beverage & Program
Catered By: Flavored Celebrations

Chamber Office Closed Memorial Day

The Great Bend Chamber of Commerce & Economic Development will be closed Monday, May 30th in observance of Memorial Day. We will resume normal business hours on Tuesday, May 31st.



Celebrating **50 Years**
of Serving People with
Developmental Disabilities!

"The Choice for Growth."

Early Education
Case Management
Disability Supports
Residential Assistance
Community Employment
Recycling & Manufacturing
General Public Transportation
And MUCH More!

www.sunflowerdiv.com

CHAMBER COFFEE SCHEDULE

Every Thursday at 9:30 am

May 5, 2016

Grace Community Church - 210 McKinley St.

Grace Community Church exists to lead people to an abiding relationship with Jesus Christ so they may abound in fruitfulness to God's glory and their most profound joy. (John 15:1-11) Join us at the Chamber Coffee or visit our website for more information -

www.GraceGreatBend.org

May 12, 2016

AlternaCare - 2708 10th Street

AlternaCare Home Medical Equipment is a full line home medical equipment provider in Great Bend and Hoisington. Services include Oxygen, CPAP, Lift Chairs and Wheelchairs. AlternaCare serves customers across Central Kansas.

May 19, 2016

Hutchinson Regional Medical Center - Chamber Board Room

Hutchinson Regional Healthcare System is made up of six entities: Hutchinson Regional Medical Center, Horizons Mental Health Center, Hospice and Home care of Reno County, Health-E-Quip, Ray E. Dillon Living Center and Hutchinson Regional Medical Foundation.

May 26, 2016

Quality Inn - 3500 10th Street

Get more for your hard-earned money at the Quality Inn. Our friendly and helpful staff will treat you like family. We feature: Free hot breakfast, Free Wi-Fi and an Indoor pool. Relax in your guest room with premium bedding and amenities like 40-inch TVs, coffee makers, desks, hair dryers, microwaves, refrigerators, irons and boards.

June 2, 2016

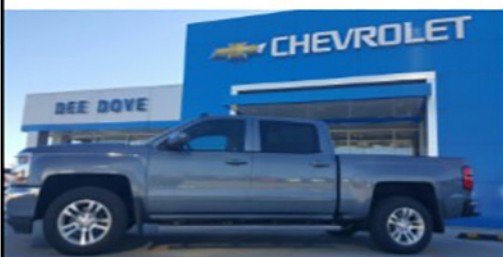
Clara Barton Hospital Foundation - 250 W 9th St.

(Hoisington Location)

Clara Barton Hospital serves our local communities, keeping our future healthy. The Foundation is dedicated to fundraising for the non-profit hospital. Join us in preparation for the Annual Benefit Event! (Please park across the street in the west parking lot to allow parking space for patients.)

SPRING

SAVINGS



DOVE Chevrolet
Buick Cadillac

Great deals on 2016s!
Come See Us!

620-792-8266

4217 W 10th in Great Bend

www.dovechevy.com



3307 10th Street • Great Bend, KS 67530

McDonald's

is providing coffee for Chamber of Commerce coffees.