



FEBRUARY 2018 • VOLUME 97 NO. 2

# OUTLOOK BUSINESS JOURNAL

A MONTHLY PUBLICATION OF THE GREAT BEND CHAMBER OF COMMERCE AND ECONOMIC DEVELOPMENT

## Professionals Invited to “Build Bridges” Solve Workforce Readiness in Unique Collaboration Feb. 20

According to a study by The Education Trust released in 2016, 47% of American high school students graduate without completing a college-ready or career-ready course of study. This study also shows that too many students leave high school with a diploma in hand, but no clear path forward. Here in Great Bend, leaders from the Great Bend Chamber, USD 428, Kansas WorkforceONE, and the business sector are partnering to discuss local strategies for improving these statistics through a new event called “Building Bridges” happening February 20th.

“Barton County businesses and employees are invited to participate in the first ever Building Bridges event in Great Bend,” says Andrea Bauer, Director of Business Development for the Great Bend Chamber of Commerce & Economic Development. “We are hoping this event will create connections between the workforce and our educators, and we’re modeling it after other successful events like it around the country.”

The goal for the forum is to bring industries and businesses together with economic development, workforce development, and education to identify what schools should be teaching students in an effort to prepare them to be a viable part of our local workforce. “Our hope is that this event will help students explore career opportunities, and inform them that quality jobs and industries are available right here in our area,” Bauer says. “Your participation will provide valuable feedback and resources for the Career & Technical Education instructors and students at Great Bend High School.”

The event will begin at 6:00 p.m. with networking and appetizers in the Commons Area at Great Bend High School, located at 2027 Morton Street. Then at 6:30, things will kick off with opening introductions and a brief presentation. Breakout sessions with CTE instructors will begin at 7:00 p.m. for industry specific dialogue and discussion. Topics for discussion will include:

- What soft skills and technical skills are necessary for students to be college and career ready?
- How do we give students hands-on experience in your field of expertise? What do these opportunities look like?
- How can we get students to stay and work in Barton and surrounding counties?

“This event will only be successful if business leaders from all areas will attend and provide feedback to Great Bend High School instructors,” Bauer says. “We hope our members will take time to attend. Attendance is not limited to just business owners or HR managers.”

For more information or to sign up, contact GBHS ACT/Career Coordinator Lacy Wolters at 620-793-1521 or email [lacy.wolters@usd428.net](mailto:lacy.wolters@usd428.net).

### Employers Are Looking For:

- Professionalism or Work Ethic
- Oral & Written Communication
- Teamwork & Collaboration

Source:  
US Dept. of Labor publication  
*Essential Skills to Getting a Job*

- Critical Thinking Skills
- Problem Solving Skills

### Key Competencies for Success:

- Professionalism
- Communication Skills
- Teamwork

See Also:  
ACT: Essential Soft Skills  
Resources at [www.keytrain.com](http://www.keytrain.com)

- Critical Thinking Skills
- Problem Solving Skills
- Networking & Enthusiasm

## Nex-Tech-ology

The Science of Delivering  
Premium Technology Solutions



**NEXTECH**  
Your Broadband & Technology Company

3700 10th St • 792.3908 • nex-tech.com

## Dilly & Doc Creative Studio Opens in Downtown

Dilly & Doc Creative Studio is in the business of all things creative. They strive to provide an environment where attendees can express their creativity, a chance to learn a new skill, or even just an evening of fun and laughs with friends. Open by appointment and during classes, you can visit the Dilly & Doc Creative Studio at 1119 Main Street. A schedule of upcoming classes can be viewed on their Facebook page, individuals or groups can book to attend. Classes include painted wood shapes & door hangers, Chalk Paint 101 Classes, furniture refinishing & more! Dilly & Doc classes are for every skill level and step-by-step instruction is provided by owners Phyllis & Brad Brack. The Great Bend Chamber welcomed Dilly & Doc as a new member in early January. To register for a class and learn more, find Dilly & Doc on Facebook.



## Welcome to Our 2018 Chamber Ambassadors!

The Chamber Ambassador Club serves a vital role in the life of our Chamber. Assisting with networking events, ribbon cuttings, groundbreaking ceremonies, and membership recruitment and retention - these volunteers work tirelessly to strengthen and support our business community. Please help us welcome your 2018 Chamber Ambassadors!

### 2018 President:

Cindy Brooke, Heartland Taxes

### Vice-President:

Curtis Wolf, Kansas Wetlands Education Center

### New Ambassadors in 2018:

Jessica Milsap, Coldwell Banker  
Cody Harris, Sunflower Diversified  
Cole Schwarz, Anderson Financial

### Retiring Ambassadors:

Aaron Andrews, MPIRE Realty Group  
Mike Fortkamp, Dayton Security  
Amy Habiger, Yours Truly  
Pete Scharz, American State Bank

### Continuing Their Service:

Brett Behrends, Behrends Tax & Accounting Solutions  
Barry Bowers, Spectrum CPA Partners  
Traci Burns, Benefit Management  
Gaila Demel, United Way of Central Kansas  
Jake Deutsch, Great Bend Coop. Assoc.  
Megan Hammeke, Great Bend Rec. Commission  
Dale Hogg, Great Bend Tribune  
Chelsea Kaundart, Great Bend Regional Hospital  
Melinda Kurth, Thrivent Financial  
Dale MacKinney, First Assembly of God

**GREAT BEND**  
CHAMBER OF COMMERCE  
& ECONOMIC DEVELOPMENT



Sarah Panning, Nex-Tech  
Shelly Peacock, TCI Answering Service  
Cole Reif, Eagle Radio  
Sonya Rein, 2B Organized  
Lexie Schneider, The Beauty Bar  
Tiffany Schoendaler, Central Plains Computer Service  
Shannon Stafford, Bling Inc  
Brandon Steinert, Barton Community College  
Dave Storjohann, Kentucky Fried Chicken  
Amanda Swigart, MPIRE Realty Group  
Steve Swigart, Sunflower National Bank  
Deanna Vannoster, Shelter Insurance

 **Great Bend**   
REGIONAL HOSPITAL

Committed to  
**AND** Caring for  
the Community!

Emergency Room & Urgent Care  
Level II Nursing  
Hospitalists Program  
Women & Children's Center  
33 Private Rooms & 4 ICU Rooms  
24/7 Surgical with 4 Operating Rooms  
New X-Ray with Lowest Dose Radiation  
Pulmonary (Lung) Function Testing  
Dietary, Pharmacy & Therapy Services  
Imaging - MRI, CT, DEXA Scan, Ultrasound  
& Digital Mammography  
And Much More!

[www.gbregional.com](http://www.gbregional.com)





## Ommission - Our Apologies!

### Chamber Welcomes Rick Taylor to Board

Last month, we featured the 2018 Board of Directors and welcomed several new members to that group of professionals. We regrettably omitted Rick Taylor from Nex-Tech, who will be serving a 3-year term. We apologize for the mistake, and want to extend a hearty welcome to Rick and all of our other Board of Director volunteers! To see the complete list, visit [www.greatbend.org](http://www.greatbend.org).



## Sign Up Now for Employer Roundtable Event Feb. 20

Are you a small business owner? Are you an HR Professional? Do you have employees? If your answer to any of these questions was yes... then the HR Roundtable may be a valuable resource for you! Looking to provide interesting topics and relevant conversation for HR Professionals and Small Business Owners alike, future luncheons will include a revamped format to encourage conversation, questions and sharing of "best practices." We hope you'll take a look at future topics and make plans to join us!

**Tuesday, February 20, 2018**

**Topic: Should My Company Consider a Drug Testing Policy?**

**Presenter: Loretta Harrison, D & A ProCollect**

The Page Banquet Room, 2920 10th Street

11:30 a.m. Luncheon

12:00 p.m. Presentation Begins

Registration: \$20.00 Per Person

Register Online: [www.greatbend.org](http://www.greatbend.org)

### Save the Date for Future Meetings:

May 15, 2018

August 21, 2018

November 20, 2018



## 2018 Legislative Coffees Slated for Feb. 3 & Mar. 10

The Great Bend Chamber of Commerce & Economic Development recently announced that it will host two Legislative Coffee events in the coming weeks, designed to give local constituents the chance to network directly with their elected state officials.

The dates for the 2018 Legislative Coffees will be Saturday, February 3rd and Saturday, March 10th with both held at 10:00 a.m. in the Spray-Holt Family Board Room at the Chamber office, 1125 Williams in downtown Great Bend.

"We invite all of our Kansas representatives and senators who represent Barton County to the coffees," says Jan Peters, President/CEO of the Chamber. "After a brief update from each legislator who attends, the audience can ask questions about the topics facing our state government." These events are open to the public. The 2018 Legislative Coffees are sponsored by Hutchinson Regional Medical Center.



Outlook Business Journal  
A monthly publication of the

**GREAT BEND**  
CHAMBER OF COMMERCE  
& ECONOMIC DEVELOPMENT

1125 Williams,  
Great Bend, KS 67530  
Phone: 620-792-2401  
Fax: 620-792-2404

Web address: [www.greatbend.org](http://www.greatbend.org)

### EXECUTIVE COMMITTEE

#### Chairman

Taylor Calcara, Watkins Calcara Chtd.

#### Vice Chairman

AJ Chrest, Aflac District Coordinator

#### 2nd Vice Chairman

Brandon Lawellin, Sutherlands

#### Immediate Past Chairman

Paul Snapp, First Kansas Bank

#### Treasurer

Taylor Dirks, Adams Brown Beran & Ball

### BOARD OF DIRECTORS

#### Aaron Andrews

MPIRE Realty Group

#### Todd Armatys

Edward Jones Investments

#### Cindy Brooke

Heartland Taxes / Ambassador Club

#### Gaila Demel

Unitetted Way of Central Kansas

#### Rebecca Ford

Catholic Charities of Southwest Kansas

#### Casey Harbour

Watco Companies

#### Diann Henderson

Great Bend Recreation Commission

#### Teresa Mazouch

Wheatland Electric Cooperative

#### Dr. Scle Murray

Murray Chiropractic Center

#### Jon Prescott

Sunflower Diversified Services

#### Lacey Schofield

Best Western Angus Inn

#### Julie Spray

The Fieldhouse

#### Nancy Sundahl

Mary Kay Cosmetics

#### Rick Taylor

Nex-Tech

#### Pete Wesner

CUNA Mutual Retirement Solutions

### EX-OFFICIO

Vicki Berryman, Great Bend City Council

Christina Hayes, Great Bend CVB

Jennifer Schartz, Barton County Commission

Dr. Carl Heilman, Barton Community College

Khris Thexton, USD #428

### CHAMBER STAFF

Jan Peters, President/CEO  
[jpeters@greatbend.org](mailto:jpeters@greatbend.org)

Andrea Bauer, Director of Business Development  
[abauer@greatbend.org](mailto:abauer@greatbend.org)

Megan Barfield, Member Relations Coordinator  
[mbarfield@greatbend.org](mailto:mbarfield@greatbend.org)

Kim Wiens, Business Manager  
[kwuens@greatbend.org](mailto:kwuens@greatbend.org)



**"You Can Have it Maid!"**

Commercial & Residential  
Cleaning by Trained & Insured  
Professionals

**PICK YOUR PLAN**  
(3 to Choose From)

**PICK YOUR SCHEDULE**  
(Weekly or Biweekly)

**Call Today: 620-805-3095**

[www.HaveItMaidCleaningService.com](http://www.HaveItMaidCleaningService.com)

## Catholic Charities Facilitates LIEAP Program

Adequate home heating and cooling are a necessity of life. If you can't heat or cool your home properly, you put your family at risk for health and safety problems. The elderly, disabled, and young children suffer the most from poor heating and cooling. If you know someone who is struggling to make ends meet, and is having a hard time paying utility bills so that they can heat or cool their home properly, they may qualify for the Low Income Energy Assistance Program, otherwise known as LIEAP. LIEAP is a Federally-funded program that helps low income households pay for heating or cooling their homes.

In Kansas, the 2018 LIEAP application period opens on Tuesday, January 16, 2018, and runs through the end of March. Regardless of whether individuals need help with winter heating or summer cooling, they **MUST** apply for LIEAP assistance during the application period between January and March; applications are not taken at any other time during the year. The best way to apply for LIEAP is to apply online. Individuals can also submit their application to:

### DCF-LIEAP

1710 Palace Dr  
Garden City KS 67846  
Email: [DCF.LIEAPWest@ks.gov](mailto:DCF.LIEAPWest@ks.gov)  
Fax: 1-888-543-3088  
Phone: 620-272-5985



Individuals who need assistance with the LIEAP application can call Catholic Charities office at 620-792-1393 to make an appointment, and one of our staff or volunteers will help them complete the application.

## Texas Tenors to Bring Unique Musical Charm to Community Concert in Great Bend Feb. 23

The Golden Belt Community Concert Association will present the Texas Tenors on Friday, Feb. 23, at the Great Bend Municipal Auditorium, Lakin and Stone. The concert begins at 7:30 p.m. Doors will open at 6:30 p.m.

Since the debut of their unique blend of country, classical and pop music during the fourth season of NBC's "America's Got Talent," the Texas Tenors have presented more than 1,000 concerts around the world. They have performed in the United Kingdom and China, and with some of the most prestigious symphonies in the United States. Their PBS special seen by viewers across the country has garnered many awards, and their albums have topped Billboard charts. They treat audiences to a unique blend of country, classical, Broadway and current pop music – from Bruno Mars to Puccini.

This GBCCA event is open to association members. Anyone wishing to purchase a season membership may do so at the door. Memberships are \$50 per adult; \$10 for any full-time enrolled student; \$110 for a family membership; and \$110 for a grandparent package. No single concert tickets are available. Full-time students of any age will be admitted to the concert for a \$5 donation at the door.

The Texas Tenors recently began performing an all-new show with the Carmel Symphony Orchestra, a family-friendly orchestra committed to enhancing quality of life through artistically excellent performances and educational experiences for audiences of all ages.

With their breathtaking vocals, humor and cowboy ways, the Texas Tenors charm their audiences with shows not easily forgotten and leave them wanting more. For more information about this concert, contact Linda Jerke, 620-793-2748, or visit [www.goldenbeltcca.org](http://www.goldenbeltcca.org).



**YOUR PROBLEM  
IS NO PROBLEM**



HEATING



COOLING



PLUMBING

**TOLL FREE: 800-937-3030**  
**COMFORTPROKS.COM**

**CoMfortPro Inc.**



## HIGHLIGHTED EVENTS IN FEBRUARY

- 1... Chamber Coffee: Shoe Sensation, 3401 10th St. @ 9 a.m.
- 1... Ribbon Cutting: Gleason Landscaping, Great Bend Chamber of Commerce, 1125 Williams St. @ 10 a.m.
- 3... Legislative Coffee, Great Bend Chamber of Commerce, 1125 Williams St. @ 10 a.m.
- 3... CASA Chocolate Auction, Great Bend Events Center @ 6:30 p.m.
- 8... Chamber Coffee & Ribbon Cutting, Dairy Queen, 2302 N Main St. @ 9 a.m.
- 8... Intro to Heroclix, Mind Sculpt Games, 1401 Main St. @ 5:30 p.m.
- 9... FiberSpace 2018 Session 2, Heartland Farm, 1049 CR 390, Pawnee Rock @ 7 p.m.
- 12... Touched By Cancer Support Group, Heartland Cancer Center, 204 Cleveland St. @ 4 p.m.
- 13... Dine for Dolly, Freddy's Frozen Custard, 3008 10th St. @ 10:30 a.m. – 10 p.m.
- 15 ... Chamber Coffee: Central Plains Computer Services, 608 Patton Rd. @ 9 a.m.
- 17... **96th Annual Chamber Banquet & Meeting, Great Bend Events Center @ 6 p.m.**
- 20... Central Kansas Partnership Meeting, Barton County Health Department, 1300 Kansas Ave #B @ 11 a.m.
- 20... Employer Roundtable: Should My Company consider a Drug Testing Policy?, The Page, 2920 10th St. @ 11:30 a.m.
- 20... Building Bridges, Great Bend High School @ 6 p.m.
- 22... Chamber Coffee: Enterprise Rent-A-Car, Great Bend Chamber of Commerce, 1125 Williams St. @ 9 a.m.
- 22... Quickbook Basics Seminar, Spectrum CPA, 1400 Polk St. @ 9 a.m.
- 22-23... Death Trap by Great Bend Community Theater, Crest Theater, 1905 Lakin Ave. @ 7:30 p.m.
- 25... Death Trap by Great Bend Community Theater, Crest Theater, 1905 Lakin Ave. @ 2:00 p.m.

### **Recurring Events:**

- Great Bend City Council Meetings, 1st & 3rd Mondays, City Hall, 1209 Williams St. @ 7:30 p.m.
- Barton County Commission Meetings, Every Monday, Barton County Courthouse, 1400 Main Rm. 106, 9:00 a.m.
- Shafer Art Gallery Exhibit: Search for the Sublime, Feb. 1– 17, 245 NE 30 Rd, Open Daily @ 10 a.m. – 5 p.m.
- Friday Night Magic, every Friday in Feb, Mind Sculpt Games, 1401 Main St., @ 7 p.m.
- Pokemon Trainer Tuesday, every Tuesday in Feb, Mind Sculpt Games, 1401 Main @ 3 p.m.
- Board Game Night, every Wednesday in Feb, Mind Sculpt Games, 1401 Main @ 5 p.m.

## City of Great Bend Announces 2018 Air Fest

The City of Great Bend recently announced the return of the Air Fest event, scheduled September 28–30, 2018 at the Great Bend Municipal Airport. The three day weekend will coincide with the 75th anniversary of the Great Bend Army Airfield.

Airport Manager Martin Miller says many of the same events and planes that made the 2015 event a success will be back again next fall including the hanger dance with live music. In addition to viewing all sorts of planes from different eras, some pilots will also be offering rides in their vintage aircraft. This includes a P-51 Bomber and the last two flying B-29 Bombers. To keep up with the latest developments for the 2018 Air Fest, follow @ExploreGreatBendKS on Facebook.



## Several Chances to Try Something New for Valentine's Day

### **Stoneridge Country Club**

Indulge in Valentine's romance at Stoneridge Country Club on Wednesday, February 14th. Membership not required to dine on this date. Enjoy a delicious Valentine's meal created by Executive Chef, David, of the Baltimore Culinary Institute! Meal price includes Prosecco Champagne Toast, Appetizer, Salad, Entree & Dessert. Offering Lenten friendly meals! Must have a reservation.

Call Stoneridge to reserve a table between 5:30 and 8:00 PM: 620-792-4303. Price varies by menu selection.

### **The Page**

Bring your sweetheart to The Page for a special "Dinner for Two" for just \$50. Meal includes a gourmet pizza appetizer, choice of two Italian Flair pastas, 1 beverage of choice, and two long stem strawberries dipped in chocolate. The regular dinner menu will also be available.

For more information, call The Page at 620-792-8700.

### **Great Bend Coffee**

Join Great Bend Coffee on Valentine's Day for a delicious dinner special for \$30 or \$35 per person. Guests get their choice of 6 oz or 10 oz filet or sesame crusted salmon with lemon chicken scaloppini and spinach and a side. Every meal includes homemade bread with dipping sauce and shrimp cocktail. Choice of house salad or spinach walnut salad. Dessert is a choice of apple dumpling or creme brulee. Call 620-603-6465 for reservations.





## 10TH STREET EYECARE CENTER

*"Your Family Optometrists"*

Dr. Russ McCaulley  
Dr. Chad Premer  
Dr. Nicole Miller  
Dr. Sarah Stueder

**620-792-2020**

Open 6 Days a Week  
2601 10th Street  
in Great Bend, KS  
10thStreetEyecare.com

## The Beauty Bar Expands - New People & Services

Located at 1908 12th St., The Beauty Bar Salon has seen tremendous growth since opening its doors in 2014. Owner and Stylist, Lexie Schneider is proud of what the salon has accomplished in its young life.

"I am so humbled by the support of all our clients, old and new. And we are excited to see what is yet to come in the New Year," Schneider says.

In the past 12 months, The Beauty Bar has grown by two and launched a brand new website. In addition to Lexie and Kaylee Biggs, who has been with the salon from the beginning, Lexie has brought in Amy Nordman and Lexie Gomez, most recently.

Gomez is a 2017 Hays Academy of Hair Design graduate, and competed at the National Wella Trendvision competition, held in Chicago, IL, placing in the Top 5. Lexie is bringing a love for all things beautiful with her and is passionate about hair, skin and nails. Services include colors, cuts, nails, body waxing and make-up application.

Early in 2017, Amy Nordman, a lifelong resident of Great Bend, joined The Beauty Bar. A 2011 graduate of Z Hair Academy in Lawrence, Amy returned home with her skills and six years in the business and as many hair shows under her belt. Nordman offers colors, cuts, nails (shellac, acrylics, nail art) and more.

To learn more about The Beauty Bar and to schedule an appointment, visit [www.thebeautybarsalongb.com](http://www.thebeautybarsalongb.com) or call 620-796-2001.

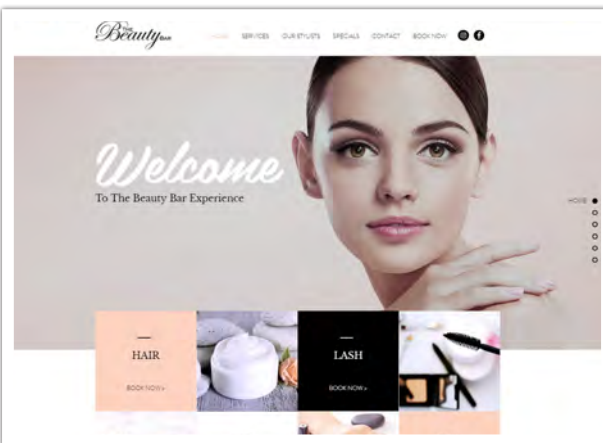
*THE Beauty BAR*



LEXIE GOMEZ



AMY NORDMAN



*Valentine's Special*

Receive 50% OFF

Gift Baskets

With The Purchase  
Of All Gift  
Certificates

## Cherry Village Recognizes Staff for Activities Week

While this is a nationally recognized week honoring Shelly Estes and her peers, she took the opportunity to thank the people who make her job easier. Estes is the activity director at Cherry Village Benevolence, a non-profit short- and long-term-care facility at 1401 Cherry Lane. She and others around the country observed National Activity Professionals Week, Jan. 21-27. "I get a lot of support from our residents and their families," Estes said. "And my co-workers are amazing. We have multiple activities every day. There are socials, bingo and game time. And we love it when young people visit our residents."



Entertaining Family?

- ✓ You take care of their plans.
- ✓ We'll take care of their comfort.



**BEST WESTERN Angus Inn**  
2920 10th Street • Great Bend, KS  
Take a virtual tour at [bwangus.com](http://bwangus.com)!  
**620-792-3541**

Enjoy Fine Dining at The Page

- ✓ Conveniently located next door!
- ✓ Banquet rooms and catering



## Almost Home Inc. Supports Employees with Tuition Assistance Program

Since Leilani Schenkel understands that employees need encouragement and support to succeed in their jobs, she took steps to ensure three aides at Almost Home Inc. could further their education. Schenkel, Almost Home Inc. executive director, offered to pay Barton Community College (BCC) tuition so the women could earn certifications as nurse's aides and medication aides.

Almost Home, a non-profit entity at 1919 Van Buren, provides health care and personal care in a home-like environment. Its services include full-time residency, adult daycare, respite care for families, and support for daily activities, such as laundry service. "It is important that the people who provide these services have the proper education," Schenkel said. "A helping hand from us can be just the incentive they need to pursue their careers and believe in themselves."

In addition, Schenkel noted, employee incentives help Almost Home residents. "We want to retain our great employees because it is important for our residents to see the same people each week. If we invest in our workforce, residents and families benefit."

The three recent tuition beneficiaries are Jessica Jones, Chelsie Roach-Link and Ebony Moon. Jones is now a certified nurse's aide (CNA) and certified medication aide (CMA), thanks to Almost Home. "This is a great benefit that helps us, as well as the residents," Jones said. "It has helped me think about the future and become even more involved in the health-care field. I wouldn't have been able to do this on my own."

Jones started volunteering at Almost Home early in 2016 as a cook and housekeeper, but left town for a while. "When I came back, I didn't know what to do," she recalled. "Leilani found me and it was a blessing. You run into people for a reason sometimes."

"I had seen first-hand the homey atmosphere here when I volunteered," she continued. "The residents and families are great. We get to know them and appreciate them."

Roach-Link already had her CNA but thanks to Almost Home she earned a CMA. She also recently received a \$500 scholarship to the BCC Nursing School from Credit Union of America, Great Bend. "One thing leads to another," she said. "When I heard what Almost Home would do for me, it was such a relief. It couldn't have come at a better time. I am grateful there are people out there willing to reach out and help with education. I am blessed."

"No words can describe how great this job is," she added. "These residents are like family to me. If you are having a bad day, they will brighten it for you. Just the small interactions can keep you going."

Roach-Link has been at Almost Home for almost four years; she also works at Great Bend Regional Hospital as a CNA. Moon earned her CNA earlier but Almost Home paid her CMA tuition. "I am so grateful," Moon said. "I have three small children and would never have thought about doing this myself. Now I can do even more for residents, who do so much for me. There is a lot of one-on-one interaction here, and my co-workers are awesome."

"I just love Leilani," she added. "She is just amazing; I couldn't be more grateful to her. She has always been there for me." Moon worked at Almost Home when it opened in 2014, left for a while, and has been back since July 2017.



## GBCT Play "Death Trap" Feb. 22-25

The Great Bend Community Theatre will present their winter production of "Death Trap" daily between February 22nd and 25th, starting at 7:30 p.m. Thursday, Friday, and Saturday. The Sunday matinee will begin at 2:00 p.m. The play, written by Ira Levin, is a comedy.

**Synopsis:** Sidney Bruhl, a successful writer of Broadway thrillers, is struggling to overcome a dry spell which has resulted in a string of failures and a shortage of funds. Until, he receives a script from a student, which Sidney recognizes could be a potential Broadway hit. Sidney devises a plan to offer collaboration to the student. Thereafter suspense mounts steadily as the plot begins to twist and turn with devilish cleverness, and with many thrills and laughter, the audience will be enthralled until the final, startling last moments of the play.

Tickets for the play can be purchased at the door. Box office opens 1 hour prior to each production, and tickets are \$12 per person. All cast members are volunteers, and proceeds support future productions and upkeep of the Crest Theatre. Learn more at [www.gbct.net](http://www.gbct.net).

## maurices 'Shop in the Name of Love'

On Sunday, February 11th from 2-4 p.m., the maurices store located at 3511 10th Street in Great Bend, will be hosting a special "Shop in the Name of Love" event for customers to enjoy special savings in a fun atmosphere!

This is a great time to stock up on Valentine's gifts for your sweetheart or your "gal-entine" friends! The public is invited and all are welcome. Call 620-793-3699 for details, or find their page on Facebook.





4 out of 5  
dogs over the age  
of three have  
gum disease

During the month of February, get

**\$20 OFF**

pet dentals and equine floats  
plus a **FREE** dental pack with  
discounted food.

**620-792-1265**



Phone: **620-792-5700**  
1905 19th Street in Great Bend, Kansas

## Family Practice & Mental Health Services

Preventative Care  
Prescription Assistance  
Diabetes Management  
Evening Appointments  
Open to Everyone  
Bilingual Staff

All Insurance Accepted  
Including Medicare, Medicaid & KanCare

*"We Care About Your Health"*  
**www.HeartofKansas.com**

## United Way of Central Kansas - Activities Update

Valentine's Day is just around the corner and United Way of Central Kansas, along with ElderCare, Golden Belt Home Health & Hospice, and Meals on Wheels are excited to once again be bringing Box of Love to homebound seniors. After the success of the program last year, it has been expanded to all our communities including Great Bend, Hoisington, Ellinwood, and Larned. With the support of local businesses and churches, more than 15 boxes were placed around Barton and Pawnee counties where items could be dropped off. We once again filled these boxes many times over and will be delivering Valentine's Day boxes, with homemade cards from Great Bend Children's Learning Center and Girl Scouts, to more than 200 seniors. We also had generous donations from Dillons of chocolates, Landmark Bank and St. Rose Health Center of gripper socks, and support from Thrivent Financial Services to make sure we have everything we need to put these boxes together. We greatly appreciate the support that our communities show for seniors in our area.

Before we deliver those Boxes of Love, we will be celebrating "211 Day" on February 11th. 211 is a service that can be accessed at no cost to the person or people seeking help. It is a toll free phone call to a trained operator who can assist in connecting people to services and resources in our area. Childcare, paying your bills, counseling, food assistance, and shelter are just a few of the many services that can be found by calling 211. Many of our 23 Community Partners are a part of 211 and simply by calling one phone number, you can be connected with the agency that will best be able to help. Our Community Partners include Barton County Youth Care, Barton County Young Men's Organization, Central Kansas CASA, Child Abuse Prevention Education, Catholic Charities of Southwest Kansas, Caring Hands Daycare, Cerebral Palsy Research Foundation of Kansas, ElderCare, Ellinwood Heritage Senior Center, Family Crisis Center, Girl Scouts of Kansas Heartland, Golden Belt Home Health & Hospice, Great Bend Children's Learning Center, Habitat for Humanity, Hoisington Community Food Bank, Hoisington Commission on Aging, Hoisington Historical Society, Hoisington Toys for Tots, Immediate Intervention Programs, Meals on Wheels, Volunteers in Action/RSVP, and Salvation Army-Barton & Pawnee Counties. You can still make a donation to support UWCK and our Community Partners. Donations can be made on our website, [www.uwck.org](http://www.uwck.org) or mail your donation to 1125 Williams, Great Bend, KS 67530.



## Up N Rollin Wins Free Website Design in Contest

During the month of January, local design firm Marketing Maven Consulting hosted a contest called 'Roast Your Website' where business owners could nominate themselves to win a new website design by pointing out the flaws of their current website. Dozens of entries were received, and recently the design team announced that Up N Rollin Skate Center was named the contest winner.



"Out of all the nominations, we realized that the businesses who could benefit the most from a new design are the ones that didn't have a website at all," says Rachel Mawhirter, owner of Marketing Maven. "In this day and age, if people can't find you online, they might move on to the next business. We are going to create a fun and interactive website that makes it easy for Great Bend residents and visitors to find their hours, contact information, and party pricing."

Up N Rollin Skate Center opened in April 2013 on 9th Street in Great Bend. After several years of continued growth, they moved to a new location in the Village West shopping strip in April of 2017. Their new facility boasts over 10,000 square feet of indoor family fun, including roller skating, military combat style laser tag, and private party spaces for birthdays and other events. "We couldn't be more excited about the new website, and are excited to see it go up really soon," says Sara Love, co-owner of Up N Rollin. "We'll be sure to share a link on our Facebook page as soon as it's done!"



## Country Place Senior Living Receives Award from Hoisington Chamber for Health

On Saturday, January 13, Country Place Senior Living and Memory Care of Hoisington was awarded the Hoisington Chamber of Commerce's Community Award for Health. The award, in recognition for service in the field of health and medicine, was voted on by the Chamber Ambassadors.

Hoisington's Chamber staff said Country Place was chosen because of the numerous activities they have added to their schedule to keep everyone actively involved, from residents to family members and the community.



Country Place® Senior Living of Hoisington is the flagship residence of what are now thirteen residences across the state of Kansas. The vision of Country Place's founder and CEO, Jack West, was to create the best, most elegant way to care for our honored seniors and allow them to gracefully age in place. With that mission in mind, Hoisington's Country Place assisted living residence opened in February 2003 followed by, another first for the company, a memory care residence in November 2007. Country Place's motto is Life as you want it...Care as you need it®. They hope to provide just that to their residents and to their resident's supportive loved ones.

Country Place Senior Living and Country Place Memory Care currently employs 17 full-time and 10 part-time employees and is called home by 26 residents. Their leader and director, Missy Pflughoeft, has been with the company for 7 years. During her time Ms. Pflughoeft has worked to involve the community in Country Place's extensive activity program and also to support as many of the community and business endeavors as possible. Country Place Senior Living and Memory Care look forward to being an integral part of the community for many years to come and hope that area residents continue their priceless involvement in resident centered activities.

## Sunflower Bank ABC Program Returns in 2018

Sunflower Bank's annual signature ABC Program has raised over \$1,139,000 since 2001 for local schools and students in its Colorado, Kansas, and Missouri communities. As the Bank has expanded, the program has grown with it, raising much needed funds for supplies, equipment, and books. In 2018 Sunflower is proud to introduce the program to its First National 1870 branch locations in New Mexico and Texas. The ABC Program runs January 2 through March 31 and supports approximately 300 schools.

"Our focus has always been on creating possibility in the lives we touch and the communities we serve," said Mollie Carter, CEO. "By supporting and contributing to our local schools and students, we help provide unique programs and educational opportunities. The ABC Program reflects the essence of our culture and our commitment to those we serve and we are excited to expand its reach this year."

Based on community participation during the campaign, the bank provides money to benefit local K-12 students and their schools by making ABC Program donations of:

- \$50 for every Spend & Sign & Save checking and savings account package opened
- 5¢ for each debit card point of sale transaction when 'credit' is selected
- \$10 for every 'A' on a student's report card if their card is one of five cards drawn at every local branch, plus a matching donation for their participating school. The drawing is open to all students in grades K-12, \$100 maximum per report card. No purchase necessary.

Visit a local branch or [SunflowerBank.com/ABC](http://SunflowerBank.com/ABC) to learn more about the ABC Program and to register a Sunflower Bank or First National 1870 Debit Card to a specific participating school in support of education.

## LET'S GET FIT - Battle of the Bulge Begins Feb. 15th

Back by popular demand, the Club 1 Fitness Battle of the Bulge weight loss competition is returning February 15th through April 1st, 2018. This is your chance to get fit, stay accountable, and have fun with a shot at winning some awesome cash and prizes.

"Our condensed 6-week format is just long enough to see some real results but short enough that participants can stay committed," says General Manager Chris Berger. "Competitors weigh in on the 15th and then get access to all of our awesome group fitness classes and gym amenities with the help of our trainers to help them shed pounds and inches."

Battle of the Bulge is open to everyone, regardless of membership status at Club 1 Fitness. Entry fee is \$49 per person for gym members and \$75 per person for non-members. You can assemble a team of four, or just sign up as an individual to be grouped with other competitors. Prizes are awarded in four categories based on percent of weight loss and total inches lost, giving participants several ways to win.

In addition to the group workouts and prize incentives, registration fees also include a competition t-shirt, access to nutrition tips and accountability in a private Facebook group, and admission to the awards presentation at the end of the competition. To learn more about the competition or to get registered, visit [www.club1fitness.net](http://www.club1fitness.net) or stop by Club 1 Fitness at 3806 Broadway in Great Bend, Kansas. For more details, call 620-792-1366.





**BASEBALL & SOFTBALL LEAGUES NOW FORMING!**

Youth Leagues available for 3 year olds thru 9th Grade.

Adult Softball Teams enrolling for Men, Women, & Coed Leagues.

Early Bird Enrollment begins February 26, 2018



Great Bend Recreation Commission  
1214 Stone Street  
620.793.3755  
facebook.com/greatbendrec



**7TH ANNUAL**

GREAT BEND CO-OP KSN AMERICAN HAT COMPANY, INC.

**April 4-6, 2018**

[www.greatbendfarmandranchexpo.net](http://www.greatbendfarmandranchexpo.net)

April 4th 9 a.m. to 5 p.m.  
April 5th 9 a.m. to 7 p.m.  
April 6th 9 a.m. to 4 p.m.

**Reserve your exhibitor space today!**



## Moeder Welcomed to Sunflower Board of Directors

Cheri Moeder realizes that Sunflower Diversified Services is an extended family to its clients and is eager to join that family in her new position on the non-profit agency's board of directors. Sunflower serves infants, toddlers and adults with developmental delays and disabilities in Barton, Pawnee, Rice, Rush and Stafford counties.

"As an extended family, Sunflower offers a genuine sense of belonging," Moeder said. "The agency also provides many programs that allow people to be as self-sufficient as possible. All of this is provided in a comfortable and caring atmosphere."

"Serving on the board of directors is a wonderful opportunity to support clients and their families," she continued. "I'm happy to be part of this great organization that provides vital services throughout central Kansas. In our rural area, Sunflower offers a level of comfort, compassion and concern that isn't available anywhere else."

Moeder, from La Crosse, is one of three Rush County residents currently serving on the board of directors. The other two are Edmund Oborny, rural Bison, and Cheryl Conard, rural Timken. "Board members from each of Sunflower's five counties demonstrate the commitment to meet the needs of each community," Moeder said. "The challenges, and the services to meet those challenges, can vary from county to county."

"A diverse representation on the board allows Sunflower to focus on these varying needs," she added. "My goal is to provide whatever experience and expertise I can to help Sunflower meet its goals."

Currently, Moeder is the Pathways Grant Coordinator at Clara Barton Hospital in Hoisington. However, she spent most of her career in marketing and corporate communications at CPI Qualified Plan Consultants (now CUNA Mutual Retirement Services).

Jon Prescott, Sunflower executive director, said Moeder brings much-needed expertise to the board. "It is so important to have board members with experience in areas such as managed care, governmental affairs, banking, accounting, operational law, medical services, finance and social media," Prescott said. "Cheri joins our team with expertise that we didn't yet offer on the board."

"With her background in marketing, Internet business and grant writing, she is a great addition to our board."

Sunflower is in its 51st year of serving families in central Kansas.



## BCYP Members Assemble Preschool Literacy Kits

Last month, 19 members of the Barton County Young Professionals group gathered in the conference room at the Chamber Office to help assemble more than 400 literacy kits for United Way of Central Kansas. The kits include flash cards, alphabet worksheets, and other resources for parents to use when helping prepare their preschool students for kindergarten. The kits will be distributed to local schools in Barton and Pawnee County to be given out during Kindergarten roundup events this spring. BCYP organizes several volunteer events throughout the year.

Anyone interested in getting involved should visit [www.bartonyyp.com](http://www.bartonyyp.com) to join!





## BCYP Volunteers Step Down After Years of Service

Barton County Young Professionals is excited to head into 2018 with new leadership and a renewed energy for providing opportunities to LEAD. NETWORK. VOLUNTEER. in the community. Supported by a volunteer Steering Committee as well as numerous action teams, volunteers are the backbone of the organization. BCYP would like to take this opportunity to recognize two volunteers who completed their terms at the end of 2017, and have contributed so much to the program over their years of service.

- **Rachel Mawhirter** helped revive the YP program in 2011 as a staff member at the Great Bend Chamber of Commerce. She has served YP in many roles, as administrative support, PR muscle, event planner, visionary, and more! As she continued on in her career, Rachel persisted in her involvement with BCYP contributing to the YP5K (now Flatlander Half Marathon), PR Team, Community Impact Team, Leadercast and more.
- **Rob Bauer** joined the Steering Committee in January of 2015. Joining the group just as BCYP was working to take their structure to the next level, Rob was instrumental in drafting the BCYP By-Laws which provide a strong foundation for the future of the BCYP. Rob served on the Leadership Team which works on projects like the Leadership Luncheons, seminars and more.



BCYP is grateful for the service of these two individuals in the past as well as in the future. Anyone interested in volunteering with BCYP, either on the group's Steering Committee, or in a number of volunteer action teams, should email bartonyp@gmail.com for more information. Upcoming events are also listed on the group's website, www.bartonyp.com and on the group's Facebook page.

## PM Sleep Lab & Sister Company to Host Open House

Advanced Medical DME is a sister company to PM Sleep Lab and is hosting an Open house. Stop by to learn more about what Advanced Medical DME can do for you. Tuesday, February 6th from 4-6 p.m. at their Great Bend location at 3520 Lakin Avenue. Guests can bring in their CPAP machine for a free demo of the SoClean or VirtuClean. If not cleaned correctly, these machines are the perfect breeding grounds for bacteria and germs! These machines automatically clean 99.9% of germs found in CPAP equipment that cause infectious diseases like pneumonia and the flu. Guests will also be able to learn about new masks from the Respironic representative, and can see a demo of the Afflovest. "We hope to see you there!"

## Kentucky Fried Chicken Debuts New Menu Items

Kentucky Fried Chicken is excited to introduce their newest flavor chicken. As an additional choice for your dining pleasure, "Tastes of the South" will now include Smokey Mountain Barbeque to go along with the Nashville Hot and Georgia Gold flavors. This flavor brings home the great taste of BBQ from the Smokey Mountain region. KFC also has changed the buffet to include salad and feature entree's like BBQ chicken on Monday and Chicken Fried Steaks on Tuesday with other features throughout the week. Stop into KFC in Great Bend and try the new "Tastes of the South" and all the great food you have come to know and love.



## GREAT BEND CHAMBER OF COMMERCE & ECONOMIC DEVELOPMENT

### Welcome to Our NEW Chamber Members

#### MY FAVORITE FURNISHINGS

Jim & Suzan Haynes, Owners  
401 Broadway Ave.  
Larned, KS 67550  
(620) 285-6944  
suzan@myfavoritefurnishings.com  
**Furniture - Home Furnishings**

### Corrected Listings from Last Month's OBJ

#### DOTERRA AROMATOUGH THERAPY BY CATHY

Cathy Morris, Massage Therapist  
Hoisington, KS 67544  
(620) 786-4584  
cornchips1326@cox.net  
**Massage Therapy**

#### GLEASON LANDSCAPING

Sean Gleason, Owner  
5532 Eisenhower Ave.  
Great Bend, KS 67530  
(620) 282-4597  
gleasonlandscapingks@gmail.com  
**Landscape Design / Nurseries**

## Don't Forget About the Online Directory

Looking for a product or service in the Great Bend area? Trying to remember the name of the person you met at last week's Chamber Coffee? Wanting to find a phone number for a local business?

All of these are great reasons to utilize the Chamber's searchable, online Directory at greatbend.org! We're working hard to make your business easy to find, but also to help you find what you're looking for!



**CELEBRATING OVER 51 YEARS  
OF SERVING PEOPLE WITH  
DEVELOPMENTAL DISABILITIES!**

*There is a Difference.*

EARLY EDUCATION  
CASE MANAGEMENT • DISABILITY SUPPORTS  
RESIDENTIAL ASSISTANCE  
COMMUNITY EMPLOYMENT  
RECYCLING & MANUFACTURING  
GENERAL PUBLIC TRANSPORTATION  
WESTSIDE MARKET  
AND MUCH MORE!

**620-792-1321**

**WWW.SUNFLOWERDIV.COM**

## **Hutchinson Clinic Physicians Serving the Great Bend, Hoisington & Ellinwood Areas**

### **GREAT BEND:**

Hutchinson Clinic Great Bend / 3715 6th Street  
Dr. Jamil Ahmed, Cardiologist  
Tricia Gilligan, PA, Pulmonology  
Natalie Williams, PA, Pulmonology  
Dr. Curt Thompson, Interventional Radiologist

### **ELLINWOOD:**

Ellinwood Medical Clinic / 611 N. Main  
Dr. Lindsay Nordwald, OBGYN

### **HOISINGTON:**

Clara Barton Medical Clinic / 250 W 9th St  
Dr. Geoffrey Kraemer, Podiatrist  
Dr. Costy Mattar, Cardiologist  
Dr. Christine Sanders, OBGYN  
Dr. Curt Thompson, Interventional Radiologist

**Exceptional Care Close to Home**



**Call for an appointment: 620-669-2500**  
**www.hutchclinic.com**

## **CHAMBER COFFEE SCHEDULE** **Every Thursday | Doors Open at 9am | Program at 9:30am**

**February 1, 2018**

### **SHOE SENSATION**

**3407 10th Street in Great Bend**

We LOVE Shoes!!! Our mission at Shoe Sensation, Inc. is to provide quality and brand name footwear for the entire family. From toddlers to seniors, our large selection of shoes has something for everyone as the typical Shoe Sensation will showcase over 10,000 pairs of the latest styles.

**February 8, 2018**

### **DAIRY QUEEN**

**2302 N. Main Street in Great Bend**

The Dairy Queen was built in 1948. Since then it has undergone many changes with different owners. Join us to celebrate 70 years in business with our brand new look!

**February 15, 2018**

### **CENTRAL PLAINS COMPUTER SERVICE**

**608 Patton Road in Great Bend**

Central Plains Computer Service has been a provider of computer sales and service for over 30 years. Our company is also a local internet service provider, which includes high-speed wireless broadband internet, web hosting, email hosting, web and graphic design services and management of all services.

**February 22, 2018**

### **ENTERPRISE RENT-A-CAR**

**Spray-Holt Family Board Room | Chamber Office, 1125 Williams Street**

What's the Enterprise Way? Taking care of our customers, our communities, our employees and our environment. Founded in 1957, our massive network means Enterprise is the largest transportation solutions provider. We offer car and truck rentals, as well as car sharing and car sales. We're in over 85 countries with more than 7,600 locations. What does this mean to our customers? We're there when you need us.

**March 1, 2018**

### **MAGNA DRY**

**2646 Main Street in Great Bend**

Come visit our new location! Magna-Dry is a unique carpet cleaning company in that we offer a true dry-cleaning process which utilizes a dry-cleaning fluid to clean carpets instead of water or soap. Magna-Dry's carpet cleaning system includes a little static electricity, a little warmth, standalone equipment (no hoses being dragged through your house from a truck outside), and our professionally trained carpet cleaning technicians. The RESULT is cleaner, drier, residue-free carpet that you can walk on and use within one hour or so.



3307 10th Street • Great Bend, KS 67530

**McDonald's**

is providing coffee for Chamber of Commerce coffees.