



SEPTEMBER 2019 • VOLUME 98 NO. 9

OUTLOOK BUSINESS JOURNAL

A MONTHLY PUBLICATION OF THE GREAT BEND CHAMBER OF COMMERCE AND ECONOMIC DEVELOPMENT

Food Trucks, Family Activities, Expo & More to be Featured at Barton Community College 50th Anniversary Open House

Barton Community College opened its doors 50 years ago in 1969, which means the 50th graduating class is now in the classrooms. The college is celebrating all year and is kicking it off with a huge open house celebration set for 11 a.m.-4 p.m. Sept. 28. An 8-page program that includes a schedule of events and a map of the various activities is included in this issue of the Great Bend Tribune.

BARTON
COMMUNITY COLLEGE

The day will feature more than half a dozen food trucks, hands-on learning opportunities, family friendly activities like bouncy houses and lawn games, a program expo, a performance by the dance, music and theatre programs, planetarium shows, a touch-a-truck event with combines and semis and much more. The event is free and open to the public.

Chair of the Barton Board of Trustees Mike Johnson said he looks forward to celebrating with the community and partners who have made the college's first 50 years amazing, and set the college up for an even brighter future. "We have incredible faculty, staff and administrators who keep the wheels greased and turning efficiently," he said. "Their efforts paired with the investment, generosity and collaboration of our county's citizens, businesses and communities has helped us remain good stewards of our local taxing resources and made it possible for us to maintain a vibrant educational institution both now and moving forward in the next 50 years."

Johnson said the trustees have made it a priority to keep taxes flat, and are proud to be entering the 13th year with no increases in the mill levy. This was possible partly through the diversification of revenue streams, which grew organically as opportunities were identified and pursued by a progressive administration; opportunities like concurrent enrollment in high schools, two campuses on military installations, an adult education center, a HazMat and OSHA training center and training centers at two correctional facilities.

The diversity of Barton's program offerings grew as fast as its outreach programs, with about 30 career-technical degrees or certificates, some offered in cutting-edge formats that allow students to land a \$50,000-per-year job after just a semester of training, like natural gas measurement or scales technician.

The college was also an early adopter with online education, launching its first virtual courses more than 20 years ago. BARTonline, the online learning platform, grew drastically in the last decade and now accounts for about half of all of Barton's enrollments, serving students all over the planet and making it possible for Soldiers to continue their studies while deployed.

- Cont. on Pg. 2



We'll take care of this...

so you can take care of that!


NEXTECH
 Your Broadband & Technology Company

The technology experts

**Trust us with your
business technology
solutions, so you
can focus on
what matters most.**

Receive a free technology consultation!

Contact us today.

**nex-tech.com/business
800-588-6649**


**THE UNIVERSITY OF
KANSAS HEALTH SYSTEM**

**Committed to
caring for the
Great Bend
community.**

Providing the Great Bend community greater access to the resources of the only academic health center in Kansas. Together, we are committed to ensuring the continued well-being of this community, close to home.

kansashealthsystem.com/community
BARTON
 COMMUNITY COLLEGE

50th Anniversary

- Cont. from Pg. 1

The college's athletic programs are top-notch as well, boasting 57 national championships and an ever-growing list of sports, with wrestling, swimming and bowling added in the last few years.

The open house celebration on Sept. 28 will feature info booths about the college's many programs, campuses and achievements scattered around campus to encourage guests to explore. To learn more about the event and the college's celebrations throughout the year, visit bartonccc.edu/50.



Learn More: www.bartonccc.edu

Concert Association Kicks Off Season Sept. 23

2019-2020 Memberships Still Available for Purchase at the Door

Sept. 23 is the date of the Golden Belt Community Concert Association's first show of the season, The Everly Set. Anyone wishing to purchase a season membership may still do so at the door of this first concert. Memberships are \$50 per adult; \$10 for any full-time enrolled student; \$110 for a Family Membership; and \$110 for a Grandparent Package. Those wanting to purchase memberships should arrive early. The doors open at 6:30 p.m.

The concerts are open to association members only. No single concert tickets are available. Because the association wants to encourage music education in the schools, full-time students will be admitted to the concerts for a \$5 donation at the door.

The Everly Set will perform at 7:30 p.m. Monday, Sept. 23, at the Great Bend Municipal Auditorium, Lakin and Stone. Acclaimed singer/songwriters Sean Altman and Jack Skuller have combined their talents to become The Everly Set bringing back the rock and roll music of The Everly Brothers of '50s and '60s fame.

In 1957, teenagers Phil and Don Everly released mega-hits "Bye Bye Love" and "Wake Up Little Susie," following them with many other hit songs. Their impact on popular music throughout the '60s and '70s is immeasurable.


**GOLDEN BELT
COMMUNITY
CONCERT ASSOCIATION**

GBCCA will continue the season with four more concerts: The Annie Moses Band, Oct. 13; "A Jazzy Little Christmas" featuring Ernie Haase and Signature Sound Quartet, Dec. 10; Classic Nashville Roadshow, April 27, 2020; and Beginnings, the Chicago Tribute Band, May 11. For more information, visit www.goldenbeltcca.org.

First Ever Manufacturing Day Launches Oct. 4th

The Great Bend Chamber of Commerce & Economic Development is celebrating Manufacturing Day in 2019 and manufacturing in Great Bend, KS with our first "Made in GBK." Held annually on the first Friday in October, Manufacturing Day helps show the reality of modern manufacturing careers by encouraging thousands of companies and educational institutions around the nation to open their doors to students, parents, teachers and community leaders. Manufacturing Day is an opportunity for manufacturers to show their communities what they do, highlight the economic importance of manufacturing, and draw attention to rewarding manufacturing careers.

If you are a manufacturer in Great Bend and would like open your doors for tours or participate in Manufacturing Day, please call Megan Barfield at 620-792-2401 or email mbarfield@greatbend.org. We will be partnering with Fuller Industries, LLC to celebrate the day and plan to include both high school and college students from the area.

Brentwood Builders Helps Hejny Liquor Expand Store

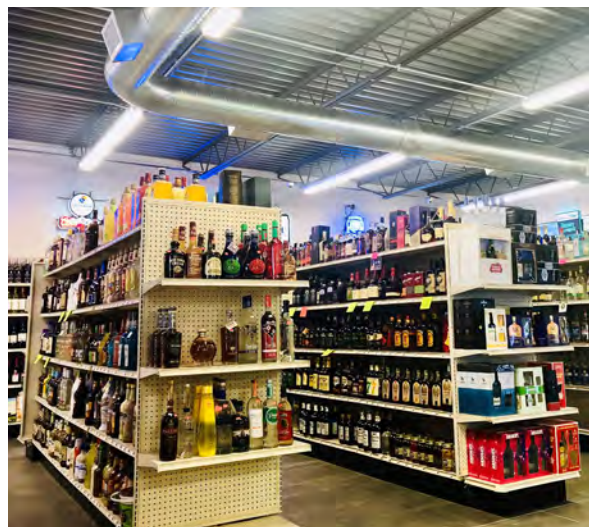
Steven Link had been looking for just the right time to expand his business. When the liquor-store laws changed recently, he found it. "I knew we needed to expand," said Link, owner of Hejny Liquor, 821 Main in Great Bend. "It was a small store for the volume of products we stocked. With the changes in state law, I thought 'now is the time.'"

The results include an additional 1,200 square feet of retail space, new products and a new walk-in cooler. The addition on the south side of the Hejny building displays spirits and fountain drinks. The north side offers a variety of snacks and soft drinks, along with cigarettes.

"In addition, prior to the changes we could sell only beer and liquor inside, and ice on the outside," Link commented. "Now we have ice available inside for the customer's convenience."

"We are similar to a convenience store and want to be a one-stop shop. If there is something our customers want, we will try to get it for them. We want to help our clientele as much as we can."

Hejny Liquor opened 33 years ago at the current location; Link bought it in 2011. Ground was broken for the expansion project in October last year. Brentwood Builders of Great Bend completed the project in March. "The customers' response has been very positive," Link said. "They love the new entrance, new look, more open space and the additional products."



He noted that he chose Andy Mingenback, Brentwood president, for the job because "he is personable and professional. Andy talks to you in simple terms. He listened to my ideas for the store and offered suggestions. Andy also found ways to save money."

Mingenback said Link "was very easy to work with on the project. He understood the weather conditions this winter were a factor but he still opened when he wanted to open. The outside and inside are very welcoming."

"It is always a good thing when business owners invest not only in the business itself, but in their employees and their community," Mingenback added.

KWEC Hosts Butterfly Festival Sept. 21

Join the Kansas Wetlands Education Center in celebrating the annual monarch butterfly fall migration at the butterfly festival on Sept. 21, from 9:00 am to noon. Participants immerse themselves in all things butterfly in addition to capturing and tagging monarch butterflies. Enjoy the magical antics of "The Instars" magicians, as they present "Butterfly Magic". At this free event, crafts and activities for kids are planned in addition to an insect zoo, live bee exhibit and door prizes. Light refreshments will be served. For more information, contact KWEC at 1-877-243-9268.



Outlook Business Journal

A monthly publication of the

GREAT BEND
CHAMBER OF COMMERCE
& ECONOMIC DEVELOPMENT

1125 Williams,
Great Bend, KS 67530
Phone: 620-792-2401
Fax: 620-792-2404

Web address: www.greatbend.org

EXECUTIVE COMMITTEE

Chairman

AJ Chrest, Aflac District Coordinator

2nd Vice Chair

Pete Wesner, CUNA Mutual Retirement Solutions

Immediate Past Chair

Taylor Calcara, Watkins Calcara Chtd.

Treasurer

Austin Coyan, Adams Brown Beran & Ball

BOARD OF DIRECTORS

Glenna Achatz

Coldwell Banker Sell Real Estate

Haley Acker

Fuller Industries / Barton County Young Professionals

Todd Armatys

Edward Jones

Rob Bauer

Bauer, Pike, Bauer, Wary & Carroll, LLC

Gaila Demel

United Way of Central Kansas

Logan Garrett

G-B Tire, Inc.

Casey Harbour

Watco Companies

Diann Henderson

Great Bend Recreation Commission

Julie Kramp

The Center for Counseling

Teresa Mazouch

Golden Belt Community Foundation

Troy McFarren

Haz-Mat Response

Shelly Peacock

TCI Answering Service

Jon Prescott

Sunflower Diversified Services

Jerry Renk

American State Bank

Lacey Schofield

Best Western Angus Inn

Julie Spray

The Fieldhouse

Rick Taylor

Nex-Tech, Inc.

Curtis Wolf

Kansas Wetlands Education Center / Ambassador Club

EX-OFFICIO

TBD, Great Bend City Council

Christina Hayes, Great Bend CVB

Jennifer Schartz, Barton County Commission

Dr. Carl Heilman, Barton Community College

Khris Thexton, USD #428

Tory Arnbarger, Kansas State Legislature

CHAMBER STAFF

Jan Peters, President/CEO

TBD, Business Development Director

Megan Barfield, Member Relations Director

TBD, Business Manager

FREE E-WASTE RECYCLING



Does your *residence* or *business* have *electronics* in need of *safe and responsible recycling*?

Computers & Monitors
Printers
Fax Machines
Laptops
Televisions
Video Game Consoles
DVD Players
VCR's & Cameras
Cell Phones
Telephone Equipment
...and More!

DROP-OFF LOCATIONS

Rosewood
Maintenance Building
2200 Main St., Great Bend
Mon - Fri, 9:00 am - 4:00 pm
Rosewood Bargain Barn
1215 Main St., Great Bend
Mon - Fri, 10:00 am - 6:00 pm

By recycling with us, you benefit your community, the environment, and you help create jobs for individuals with developmental disabilities.

You will receive a tax deduction receipt when you drop off unwanted electronics.

Rosewood ecycle
2200 Main St.
Great Bend
South of the Dairy Queen!



CONTACT INFORMATION
(620) 603-8348
www.RosewoodServices.com

The Mission of Rosewood ecycle is to provide work-related training and employment opportunities to adults with developmental disabilities.

F&E Collector Auto Auction Hits 4th Gear Oct. 5

F&E Collector Auto Auctions is preparing for the 4th Annual run of the highly successful Classic Auto Auction held October 5th at the Great Bend Expo Complex. "Three years now of history and experience with the event, our momentum just keeps speeding up," says Chris Froetschner, F&E Co-Founder. "We've had a tremendous amount of support both locally and regionally and have been able to follow through with our business strategy to really make a splash in the Classic Auto Auction world in a short amount of time."

Bring your friends and family, meet your buddies (new and old), preview classic autos, talk all things Cars, experience a live auction, eat excellent BBQ, have a beer, sell your Classic Auto, update yourself on values and ultimately try and take something home with you...or not! The sounds, smells, sights and tastes of the event will leave you yearning for more!



F&E has created an annual catalog of 80 plus Classic Autos and Collectible Automobilia bringing over 500 people through the gates annually and another 400 online bidders via the ProxiBid Platform. F&E has shipped vehicles all over the US, Canada and even Indonesia of all places! The Event is powered by Carr Auction & Real Estate, Inc. (Larned) which has 50 plus years of experience in the Auction Industry.

Join F&E Collector at the Great Bend Expo Complex on October 5, 2019 for the main event. The evening prior (October 4) will be host to an "Eagle Radio" Live Broadcast, Cruise Night with Beer Garden and Sue's BBQ. Prize drawings benefiting the SRCA Dragstrip will also be a highlight. For all information concerning F&E's Event or past history, visit www.feclassicrauction.com or find them on Facebook @FandECollector.

Telebehavioral Health Now Available at St. Rose

To better support residents of smaller communities who often face obstacles to seeing a mental health professional, The University of Kansas Health System is bringing the specialists to St. Rose Medical Pavilion. The new service is called telebehavioral health. It links a local patient with a Kansas City-based mental health specialist by secure videoconference. "This could be described as a virtual doctor's visit," said Kathryn Sleigh, telebehavioral health coordinator. "Mental health is so important, and we are bringing it to rural areas that may have a shortage of specialists in this field."



THE UNIVERSITY OF
KANSAS HEALTH SYSTEM

"Even though we are in the early stages here in Great Bend, local physicians are excited. Primary care physicians can get an outside perspective and a second opinion. They know it is important and are pleased to have this option for their patients."

Currently, the service is offered 1 day a month at St. Rose Medical Pavilion. If patient demand warrants, it could become more frequent. The secure video service, which allows privacy, also is offered at about 10 other healthcare locations in Kansas. "We encourage patients to talk with their doctors about this service," Sleigh said. "Coordination with primary care physicians is an important part of our approach."

Robert Moser, MD, executive physician advisor to The University of Kansas Health System, said "We know access to this type of service can be challenging in the rural setting because of the shortage of behavioralists. I noticed in my rural practice in Tribune, Kansas, the reluctance of patients to visit area mental health professionals because of the stigma and travel distances. This led us to integrating a behavioralist into our clinic. Patients viewed this professional as part of the local primary care team."

The Health Resources and Services Administration awarded the federal grant in support of this service. If insurance doesn't cover a visit, The University of Kansas Health System offers a 40% reduction for those who self-pay. For more information, call 785-650-2866.

2 WAYS TO
SAVE
\$100

**\$100 OFF A
WATER SOFTENER**

OR

**\$200 OFF A
WATER SOFTENER &
REVERSE OSMOSIS
COMBINATION**

Comfort Pro Inc.

(800) 937-3030

Offer Valid September 1-30, 2019

HIGHLIGHTED EVENTS IN SEPTEMBER

- 1... Caregivers Count Support Group, First Christian Church, 5230 Broadway Ave @2pm – 4pm
- 2... Hoisington's 123rd Annual Parade, Main Street @10:30am – 12:00pm
- 4... Kids Ag Day, Diamond K Farm, 706 SW 20 Road, All day
- 5... Chamber Coffee: United Way, Jack Kilby Square @9:30am
- 5... Ribbon Cutting: Just In Time Remodeling, 5000 8th St @9am
- 5... Chamber Connect Radio Show on KVGB 1590AM or 97.7FM @11:30am
- 5... Ribbon Cutting: Midwest Movers, 2817 9th St @4:45pm
- 5... Business After Hours: DAT Fitness & Beyond Limits Training, 2817 9th St @5–7pm
- 7... Golden Belt Humane Society's Adopt A Pet, Orshclens, 5320 10th St @10:00am – 2:00pm
- 12... Ribbon Cutting: Visual/Mind/Behavior Training, LLC, 2015 Forest Ave, Suite 100 @9am
- 12... Chamber Coffee: Buchanan & Assoc. w/ Am. Fam. Ins., 1201 Kansas Ave. @9:30am
- 14... Heartland Farm's Annual Farm to Table Dinner, 1049 CR 390, Pawnee Rock @5–8pm
- 17... Central Kansas Partnership Meeting, Barton County Health Department, 1300 Kansas Ave #B @11am
- 19... Chamber Coffee: Sunflower Diversified Services, 1521 K96 Hwy @9:30am
- 19... Sunflower Diversified Services Annual Pancake Feed, Prince of Peace Parish Center @4–7pm
- 19... Business After Hours: Barton Community College, 245 NE 30th Rd @5–7pm
- 21... Butterfly Festival, Kansas Wetlands Center, 592 NE K-156 Hwy @9am – 12pm
- 21... The Long Road to Women's Suffrage in Kansas, Great Bend Public Library, 1409 Williams St @10:30am – 12pm
- 21... Great Bend Zoological Society Food Fling, Brit Spaugh Zoo @2–4pm
- 24... Women's Expo, Great Bend Events Center, 3111 10th St @3:30–7pm
- 25... Facebook Pages 101 Seminar, Spray-Holt Family Board Room, 1125 Williams @9–11am
- 26... Ribbon Cutting: Marketing Maven Consulting, 1311 Williams St @9am
- 26... Chamber Coffee: Wheatland Electric, 2300 Broadway Ave @9:30am
- 26... Dog for a Dog Luncheon, Landmark National Bank, 1623 Main St. @11AM
- 27... 14th Annual Gary Gore Memorial Golf Tournament, Stoneridge Country Club, 1436 24th St @1:00pm
- 28... The University of Kansas Health System Lab Fair, 514 Cleveland St @ 6–9am
- 28... Barton Community College 50th Anniversary Celebration, 245 NE 30th Rd @11am – 4pm
- 28... Golden Belt Glow For Life 5k/1mi Walk, Large Shelter West of Vet's Lake, @6pm

Recurring Events:

Great Bend City Council Meetings, 1st & 3rd Mondays, City Hall, 1209 Williams @6:30pm

Barton County Commission Meetings, Every Monday, Barton County Courthouse @9am

See more community events by visiting our website: www.greatbend.org

Sign Up for Facebook Marketing Seminar Sept. 25

Hopefully by now your company has jumped on the Facebook bandwagon and has an active presence on social media. But it can be confusing trying to figure out how often you should be posting, what kinds of content will get you the most traction, or how much to pay for boosting content so people will see it. Have no fear, marketers! This two-hour seminar will give you the run-down on all the to-do's and to-don'ts when it comes to Facebook marketing. **In two hours or less, you will walk away with a better understanding of:**

- What to post on your Facebook page and how often you should be posting
- How much you should be budgeting for boosted posts and Facebook ads
- How and when to use your page's story and Facebook live videos

We will also touch on the various types of ads Facebook offers and how to create eye catching ads that will stand out in your customers' news feeds. Each class is limited to 30 participants, so sign up early. Members of the Great Bend Chamber of Commerce & Economic Development having special access to a 50% off coupon code (contact the Chamber to request the money-saving offer). Sign up at www.HireAMaven.com prior to September 15th.



Nex-Tech to Bring Fiber to Residents

Nex-Tech, a leader in technology, is pleased to announce the next phase of the fiber expansion will be to Great Bend area households. This provides Internet accessibility of speeds up to 1 Gig, allowing ample bandwidth for running multiple wireless devices (including streaming video) or supporting a work-from-home lifestyle.

Increased Internet speeds provide many benefits to residences and businesses. It allows the transfer of very large files over the Internet, like medical images or multimedia programming. A fiber infrastructure also levels the playing field for small, rural communities to compete with larger, urban areas for business growth, expansion and economic development.

The Nex-Tech Great Bend residential expansion continues a long-planned build, coming on the heels of extending fiber facilities to seven Great Bend schools, the district office, maintenance shop and food service center, alongside the completion of a sizable build to area businesses. The residential build completion will roll out in phases. Each neighborhood that meets the required number of customers to achieve feasibility will be prioritized in the buildout process. Neighborhoods with lower interest levels may be served with a hybrid wireless Internet solution instead of fiber. The project is estimated to take five years to complete.

"Nex-Tech expansion plans are driven in large part by our commitment to making connectivity an integral part of rural America," says Dustin Schlaefli, Director of Customer Engagement. "That said, it's an expensive proposition, so when we build, it is with an eye to the future. We know that a 10 Mbps connection is no longer enough for the average household and demand will continue to increase as technology advances."

For more information on Nex-Tech's fiber expansion in Great Bend, please visit <https://fiber.nex-tech.com> or you may stop by our store.



Manufacturing & So Much More

Celebrating a Rich History and a Bright Future for Great Bend

When Mark Chalfant mentions he works for Fuller Industries LLC, people often reply with some version of ‘do you think it is going to survive?’ As chief executive officer at Fuller, Chalfant doesn’t hesitate to reassure individuals and businesses that not only will the company survive, it will thrive.

To illustrate his reason for optimism, Chalfant pointed out that four new products are already in the works at Fuller and new hires will soon be on board. He has been here only six months; before that, he was chief operations officer at a Dodge City manufacturing company. (See adjacent story for details on the new products.)

“There has been a fear with our employees and the community about Fuller’s future,” Chalfant said. “Part of my job is to change that culture, that mindset. What Fuller is about today is a well-kept secret in Great Bend. I recognized that early on. Therefore, our goal is to expose the community to Fuller and vice versa.”

A golden opportunity for exposure is set for Oct. 4, the date for the local Manufacturing Day. The Fuller team is collaborating with the Great Bend Chamber of Commerce & Economic Development on this project. “We are heavily involved in this event,” Chalfant said. “We want to offer tours to high school students, guidance counselors, parents, under-employed people, community college graduates and others.”

Not only does Fuller offer a variety of manufacturing jobs, it also seeks people to fill roles in chemistry, quality assurance, programming and automation. For instance, as technology is brought up-to-date, new equipment will have to be programmed.

“This exposure during Manufacturing Day will help ensure people know manufacturing is an important sector of the economy in Great Bend, Barton County and the United States,” Chalfant emphasized. “This is because of the multiplier effect that goes along with it. The revenue stream is so much more than in other sectors.”

Chalfant offered a few eye-opening statistics to back up his comments. For every one dollar spent in manufacturing, another \$1.82 is added to the economy. For every one worker in manufacturing, there are four employees hired elsewhere. And, the majority of manufacturers in the U.S. are small firms.



Chalfant made special note of one of the 10 goals recently compiled by the Great Bend Better Than Great Community Visioning group. The third goal on the list is “additional industry,” which dovetails nicely with Fuller. “This is part and parcel of what Fuller is all about,” Chalfant said. “If we can grow by 40-50 employees, we would effectively be attaining this particular goal.

“So, I ask myself every day, ‘what can I do to achieve this?’ We can’t do this in isolation but rather as a piece of the greater puzzle. It would be very important to the community if we can grow the number of employees and the revenue.”

Currently, Fuller employs more than 130 people. Chalfant hopes to add “somewhere between 10 and 40 employees because of the new products. We have already started hiring and will continue as needed. There certainly will be more employees by the end of the year. “We want Fuller to grow into the company of choice as an employer,” he continued. “We want people to say ‘hey, I got a job at Fuller. I am set for life with good opportunities and a good career.’ There are fun opportunities here, as well as challenges.”

Chalfant collaborates with his “great leadership team,” which has a balance of new and experienced employees. Some have been on the job only a few months, while others have devoted more than 20 years to the company. “I have confidence in this team,” he noted. “We always talk about how to keep moving the needle forward and have all oars going in the same direction and same speed.”

Diversifying with New Products

Haley Ruble, Fuller Industries director of marketing, outlined the basics of four new products at the plant since new management started in March.

First is a roto-molding machine that makes parts for a new industrial partner. The machine will operate around the clock during three shifts. “The order is large and we will operate the machine constantly to satisfy our new business partner,” Ruble said. “The production involves an intricate design and is time-consuming.”

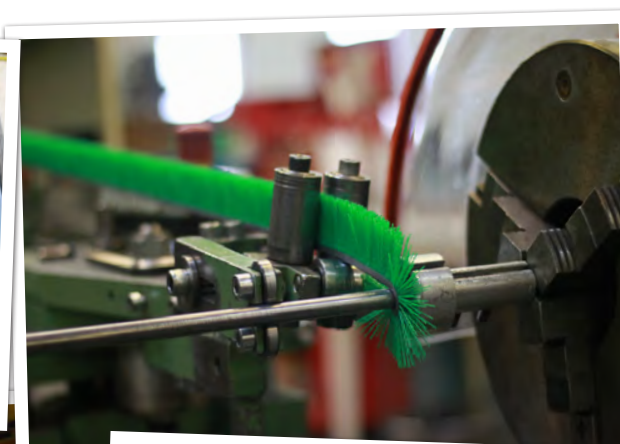
The three work shifts are expected to begin this month.

Other new additions at Fuller are: a full line of laundry detergents and fabric softeners for industrial use; a full line of cleaning products for utensils in commercial kitchens; and super-concentrated cleaning products that come in smaller containers, which are eco-friendly and cost-effective.

Ruble shared a few other details about Fuller, a company with sales and manufacturing representatives throughout the United States. It was founded in 1906. ILS is still the main stockholder; local individual investors are stockholders too.

The Fuller Retail Store, which offers a variety of cleaning products, is open 8 a.m. to 5 p.m. weekdays and 9 a.m. to 2 p.m. on Saturdays. A large catalog of products is on the Fuller website.

The company’s address is One Fuller Way, near the intersection of 10th Street and SW 40 Ave. (airport road).



Flea & TICK PREVENTION



620-792-1265



PROTECT YOUR PET TODAY!

Learn more at myamcvets.com



Phone: **620-792-5700**

1905 19th Street in Great Bend, Kansas

**Family Practice,
Behavioral Health &
Dental Services**

Preventative Care

Prescription Assistance

Diabetes Management

Evening Appointments

Open to Everyone

Bilingual Staff

All Insurance Accepted

Including Medicare, Medicaid & KanCare

"We Care About Your Health"

www.HeartofKansas.com

Stueder Contractors Celebrates 35th Anniversary

Thirty-five years ago in August 1984, a young Terry Stueder started a small service company. On Aug. 1, 1986, Stueder Contractors was incorporated. From those humble beginnings, the company has grown to over 20 employees with a fleet of 17 service vehicles.

But, there is more to the story. Stueder was just 22 years old, and had studied architecture at Barton Community College and carpentry and cabinet making at North Central Kansas Technical College in Beloit. This all helped, but that is not where he got his real start. "I grew up on a farm west of Claflin where I learned the value of a honest, hard-day's work," he said. He had also spent two and a half years working for a small HVAC firm. "I was very wet behind the ears, but I was single and able to dedicate all of my time and energy into getting the business off to a strong start," he said.



In the beginning, it was just Stueder and one other employee. They rented a small shop at 4500 10th Street Place and did only Lennox heating and air conditioning, and remodeling. "Like most business start-ups, it was a struggle," he said. "But, as I started surrounding myself with quality people, the business started to grow and we were able to add more services."

In two years, 1986, Stueder Contractors became licensed for full-service plumbing. The next year, it became state certified for electrical work. That is not all that changed. In 1987, on April 24, Stueder married MelEesa Esfeld. "With her education and business mind, the business flourished," Stueder said.

The Stueders are the first ones to say that their team is the reason for the business' success. Of the 20 employees, five have worked at Stueders for over 25 years, including Brian Wahlmeier, Alan Crowther, Steve Wondra, Gary Wondra and Harlan Davenport. Five others have worked there for over 10 years including Marla Poppelreiter as their business manager. "Many on the staff pride themselves in having master certifications," Stueder said.

Stueder Contractors, Inc is a full service cooling, heating, refrigeration, plumbing, electrical, spa/pool, acrylic bath liners and water treatment business. Stueders appreciates all of their long-term, loyal customers. And, as always, the company offers 24 hour service 7 days a week.

ABBB Named a Top 200 Accounting Firm in Nation

The certified public accounting firm of Adams, Brown, Beran & Ball, Chtd. (ABBB) was recently recognized as one of the top 200 accounting firms in the U.S. by INSIDE Public Accounting (IPA). Ranking in the top 200 consecutively for five years, the firm rose nine spots from 174 in 2018 to 165 this year. In 2019, firms ranked between 101 and 200 range in size from \$19.2 million to \$39 million in revenue.



Certified Public Accountants

"It's an honor to be recognized as one of North America's top 200 accounting firms again this year. Our dedicated focus to the agriculture, construction, manufacturing, retail, restaurant, and oil & gas industries has been instrumental to our continued growth," said Brian Staats, CPA, CGMA, managing partner of ABBB. "Thank you to our clients and the entire ABBB team for your dedication to the profession and our firm!"

Adams, Brown, Beran & Ball, Chartered provides a wide range of traditional and non-traditional CPA and consulting services to clients throughout Kansas, including agriculture organizations, construction companies, feed yards, financial institutions, governmental and not-for-profit organizations, manufacturers, medical practices, oil and gas companies, professional service firms, real estate companies and small businesses. Founded in 1945, today the firm maintains 13 office locations throughout the state. For more information about Adams, Brown, Beran & Ball, please visit www.abbb.com.

Local Startups Thriving at The Fieldhouse Incubator

The Fieldhouse may be known as a premier indoor training facility for youth soccer, baseball, basketball, football and personal training, but some magic is happening beyond the business's core products – the front office area has become a force in the local economy as an incubator for small businesses.

For example, Marketing Maven Consulting, a local marketing consulting firm, moved into the Fieldhouse almost three years ago when the business began adding employees, growing clientele and expanding services. The Fieldhouse's community-style office space, sharing resources like copiers, meeting rooms, front-desk staffing and more, meant Marketing Maven could keep overhead down to put resources behind growing the business. As of August, Marketing Maven outgrew the space and moved into a new space on Williams St. downtown.

"The Fieldhouse was a great launching pad," said Rachel Mawhirter, founder of Marketing Maven. "It gave us a professional address and all the amenities of an established company, but without all the costs. It was great to have flat billing without worrying about fluctuating utilities."

Various other enterprises have been utilizing the space as well, like Stephen McAnulla Photography and Liz Bowman's business, Symmetry Massage.

Each of the tenants underscored the importance of having the all-inclusive price that covers utilities and other perks, and the foot-traffic of young families going to and from sports clinics, but they also agreed there was something special happening in The Fieldhouse's incubator space; the community of entrepreneurs began to evolve into a support network.

"When I came in and met everyone, I knew right away it was a natural fit," McAnulla said. "I have loved being at the Fieldhouse since November. There is just a fantastic vibe to this place. It really does feel like a family here. I've made a lot of new friends since I moved in and my life has been enriched from the experience."

"This place is a hidden gem," McAnulla added. "If you have a small business that is ready to make the leap to your own office space, this place is a great option. I was originally just looking for a small room I could do indoor photos when I needed. After I got settled in I realized I could truly dig my roots in here and make it something great for my photography."

Bowman of Symmetry Massage said her space is a perfect fit for her business as well, which involves more than just massage; she also does functional movement therapy, which requires a lot of movement.

For questions about the fieldhouse, visit www.fieldhousegb.com or email owner Julie Spray at fieldhousegb@gmail.com.



Danceography Team Enters Worlds Dance Competition

Laura Klima Fehr, Danceography owner, and her competitive dance team received their first invite to the Worlds Dance Competition held in New Jersey.

The team competed in early August where they received a World Dance Finalist Award. Danceography is located at 1403 Main St. Way to represent Great Bend, ladies! Learn more about Danceography on Facebook.



GBPL to Host Women's Suffrage Presentation

The Great Bend Public Library will host "The Long Road to Women's Suffrage in Kansas," a presentation and discussion by Diane Eickhoff on Saturday, September 21 at 10:30 a.m. in the library (1409 Williams St). Members of the community are invited to attend the free program, which is made possible by Humanities Kansas.

Kansas was historically a leader in women's rights, yet the campaign for voting rights in Kansas required more than fifty years of determined effort as women suffered setbacks in three different statewide initiatives. The presentation will explore the courageous individuals who challenged the powerful interests opposed to electoral reform and explore other "firsts" that women achieved on the road to suffrage.

Diane Eickhoff is an independent historian, writer, and editor of education materials. Her most recent biography, *Clarina Nichols: Frontier Crusader for Women's Rights*, is published by Quindaro Press. This program is presented by the public library in conjunction with Humanities Kansas and the League of Women Voters in Great Bend. The library plans to host several events in 2020 to celebrate the one hundredth anniversary of women's voting rights in the United States, and this event is the first of that series.

Humanities Kansas is an independent non-profit spearheading a movement of ideas to empower the people of Kansas to strengthen their communities. Visit humanitieskansas.org for more information.

WHO: Diane Eickhoff

WHAT: "The Long Road to Women's Suffrage in Kansas"

WHEN: 10:30 a.m. on Saturday, September 21



NOW OPEN!
Toddler Playground
at Veteran's Memorial Park



3 Reasons to Hire The HR Pro



You have employees but can't afford your own Human Resources department.



Your company needs assistance tackling a special Human Resources project.



Your H.R. department needs a boost from a seasoned industry expert.



Erika Brining
SPHR & SHRM-SCP
620-793-0985



KanEquip Management Team Meets Great Bend

Family owned KanEquip, formerly Straub's International, opened their doors to the The Great Bend Chamber of Commerce & Economic and public for a Ribbon Cutting and Ice Cream Social recently. This meet and greet allowed the Chamber to officially welcome KanEquip to Great Bend and hear about their commitment to the area. Brothers Bryndon and Grant Meinhardt were on hand and spoke to the mission and presence of KanEquip, built by their father 52 years ago and now 14 locations strong. Headquartered in Wamego, KS, KanEquip can be found across Kansas and Nebraska where they strive to be community partners. One example of this is the current partnership with Barton Community College to facilitate and aid the agriculture programs. "It's all about friends, family and small towns," says Bryndon Meinhardt.

The Great Bend location employs 21 employees with positions to fill and is Case IH dealer for farm and construction equipment. KanEquip is your source for new and used tractors, combines, swathers, round and square balers, skid steers, precision-farming equipment, and much more. KanEquip also has a full line of Parts and an exceptional Service department to keep you up and running. To learn more, contact Great Bend Store Manager, Scott Dewerff at (620) 792-5256. Find KanEquip at 214 SW 40th Ave or online, www.kanequip.com.



Kansas Chamber Director Tours Rosewood Services

Bryan Frye received an "eye-opening" experience when he toured Rosewood Services on July 15. The Kansas Chamber senior director of Investor Relations spent the day touring a dozen Rosewood locations with Rosewood's Executive Director Tammy Hammond.

"I was surprised numerous times on my tour," said Frye, who regularly tours businesses in his role with the Kansas Chamber. "It's amazing how that many resources are there in Great Bend, with Rosewood providing so many different services to people with developmental disabilities. It was an eye-opener for me."

Frye and Hammond toured Rosewood Bargain Barn, Furniture Gallery, Wine Cellar and "Santas Around the World" in downtown Great Bend. They also toured client employment areas, including the Maintenance Building, Studio, Greenhouse, Ranch and Winery, the Rosewood Employment Network office, and a future training location, which is under construction. It made for a full day for the Kansas Chamber representative, who said he is always interested in learning how he can help and work with member businesses, like Rosewood Services. "We've got mom-and-pop operators to giant industries with thousands of employees who we represent," said Frye. "It's varied. I will tell you that we don't have many like Rosewood, and so that is unique and a great benefit to the Great Bend area."



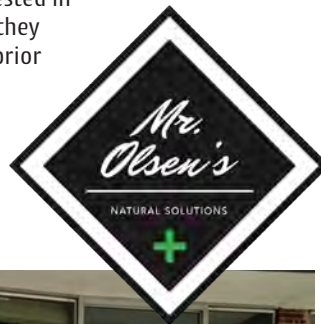
Poppy Petals Boutique Welcomed by Chamber

Samantha Naab, along with her fiancé, Rob and daughter, Sandra, welcomed the Great Bend Chamber of Commerce & Economic Development to their new retail and gift shop, Poppy Petals Boutique. Poppy Petals is located inside the Zarah Mall at 1919 Lakin Ave., Suite 109 and carries a wide array of boutique items including baby, girls and women's clothing, accessories and featured brands such as Hen and Chick, Body Karma, Simply Southern and Cheeky's. Connect with Poppy Petals on Facebook to stay up to date on incoming inventory.



Mr. Olsen's Brings Natural Solutions to the Area

The Great Bend Chamber of Commerce & Economic Development recently hosted a Ribbon Cutting for new Chamber Member and downtown Great Bend business, Mr. Olsen's Natural Solutions, located at 1702 Main St. Trevor Olsen, along with wife, Tonya, and mother, Diane, is passionate about the benefits of CBD Oils and excited to bring the "highest quality" of oils along with knowledge to those interested in learning more. The public is invited to visit their store where they will be encouraged to ask questions and educate themselves prior to purchasing. Patrons will find Diane, a registered nurse, ready to help individuals choose the right dosage and method of use dependent on goals. Mr. Olsen's carries a wide variety of CBD oil in many forms, as well as Young Living Essential Oils, scrubs and more. Visit Mr. Olsen's Facebook page to learn more and connect.



GREAT BEND
CHAMBER OF COMMERCE
& ECONOMIC DEVELOPMENT

WELCOME
to Our **NEWEST**
Chamber Members

MIDWEST MOVERS

Thomas Rein & Justin Ferguson,
Owners
3210 16th St.
Great Bend, KS 67530
620-617-1303
midwestmoversGBK@gmail.com
Find Us on Facebook
Movers / Packing / Transport

SWEET DREAMS CANDY SHOP

Shane & Skylar Meeker, Owners
1917 Lakin Ave.
Great Bend, KS 67530
(620) 796-2639
sweetdreamscandyshopllc@gmail.com
Find Us on Facebook
Candy Store

WANT TO JOIN THE CHAMBER?

If your company is interested in joining the Great Bend Chamber of Commerce & Economic Development, fill out the online application on our website: www.greatbend.org. Membership is quick and easy to get started, and it is affordable, too!

You can also sign up to attend one of our Chamber Member Orientation & Marketing Services Seminars. These seminars happen throughout the year. Sign up on our website:

[www.greatbend.org/
eventregistration](http://www.greatbend.org/eventregistration)



**CELEBRATING OVER 53 YEARS
OF SERVING PEOPLE WITH
DEVELOPMENTAL DISABILITIES!**

There is a Difference.

EARLY EDUCATION
CASE MANAGEMENT
DISABILITY SUPPORTS
RESIDENTIAL ASSISTANCE
COMMUNITY EMPLOYMENT
RECYCLING & MANUFACTURING
GENERAL PUBLIC TRANSPORTATION
& MUCH MORE!

620-792-1325

WWW.SUNFLOWERDIV.COM

Hutchinson Clinic Physicians Serving the Great Bend, Hoisington & Ellinwood Areas

GREAT BEND:

Hutchinson Clinic Great Bend / 3715 6th Street

Dr. Jamil Ahmed, Cardiologist

Dr. Aaron Thiessen, Ear Nose & Throat

Dr. Curt Thompson, Interventional Radiologist

Natalie Williams, PA, Pulmonology

ELLINWOOD:

Ellinwood Medical Clinic / 611 N. Main

Dr. Jamil Ahmed, Cardiologist

HOISINGTON:

Clara Barton Medical Clinic / 250 W 9th St

Dr. Costy Mattar, Cardiologist

Dr. Christine Sanders, OBGYN

Dr. Curt Thompson, Interventional Radiologist

Exceptional Care Close to Home



Call for an appointment: 620-669-2500
www.hutchclinic.com

CHAMBER COFFEE SCHEDULE

Every Thursday | Doors Open at 9am | Program at 9:30am

September 5, 2019

UNITED WAY OF CENTRAL KANSAS

Jack Kilby Square | 1400 Main Street

United Way of Central Kansas officially kicks off the 2020 Campaign in August. Communities in Barton and Pawnee Counties to "Join Our Camp" – supporting our valued 23 Community Partners through Workplace Campaign, Donor Mailing, Direct Gifts and Advocacy. 99% of all donations remain right here in our communities where the needs are the greatest. Join us to learn how our Community Impact programs bring resources and education to families, children and seniors. In the event of inclement weather, the Coffee will be moved to the Chamber Office at 1125 Williams Street.

September 12, 2019

BUCHANAN & ASSOCIATES, LLC - AMERICAN FAMILY INSURANCE

1201 Kansas Avenue in Great Bend

Buchanan and Associates with American Family Insurance offers multiple products to protect your family and dreams. We strive to provide excellent customer service and enjoy building relationships with the community. Our staff is here to work for you and make the insurance process as seamless and easy as possible.

September 19, 2019

SUNFLOWER DIVERSIFIED SERVICES, INC.

Westside Market | 5523 10th Street in Great Bend

Join Sunflower Diversified Services, Inc., to celebrate the upcoming opening of the new UPS Store. Sunflower Diversified Services, Inc., is the original non-profit service organization in the business of assisting children and adults with developmental disabilities. SDS is celebrating 53 years of serving communities in Barton, Rush, Rice, Stafford and Pawnee Counties.

September 26, 2019

WHEATLAND ELECTRIC

2300 Broadway Avenue in Great Bend

Wheatland Electric is proud to "Deliver Energy for Life" to more than 20,000 Kansas homes and businesses with a total of about 32,000 meters. We care because we're not just a company. We're a Cooperative. We're owned by the people we serve. Those people are spread out over 14 different Kansas counties and parts of 2 counties in Colorado.

October 3, 2019

FIRST KANSAS BANK

4001 10th Street in Great Bend

First Kansas Bank prides itself on highly personalized customer care delivered by local decision makers. We also offer the latest technology to make banking with us easier for you. For 118 years, our Bank has offered loan and deposit products to meet the needs of individuals, commercial businesses, and agricultural producers. We provide full service banking in Hoisington, Claflin, Great Bend and Hays.



3307 10th Street • Great Bend, KS 67530

McDonald's

is providing coffee for Chamber of Commerce coffees.

PEOPLE ON THE MOVE - New Hires & Promotions

Welcoming New Faces



Milan Simic
*Strategic Solutions
Advisor*

Adams, Brown,
Beran & Ball, Chtd.



Announcing New Promotions



**Nicole
Henderson**
*Promoted to Senior
Vice President*
Plains State Bank



Angie Hicks & Montara Gaddis
Agent Assistant & Customer Service Rep.

Buchanan & Associates, LLC / American Family
Insurance



All your protection under one roof®



Doug Thurman
*Promoted to
President*
American State Bank



Willie Ayers
*Promoted to
Production Manager*
Sunflower
Diversified Services



Congratulations!

*to all of these fabulous professionals on advancing your
career here in Great Bend, Kansas! We are proud!*

NETWORKING EVENTS - Upcoming Chamber After Hours

Join Us for Three More Business After Hours Events in the Coming Month

Thursday, September 19th

Hosted by Barton Community College

Join Barton Community College for a hands-on demonstration of the new Nex-Tech Active Classroom during this Chamber Business After Hours on Thursday, September 19th from 5:00 to 7:00 pm in the Classroom Building. This will also be a special celebration of the college's 50th Anniversary! Check out the story on Page 1 to get full details.



Tuesday, October 1st - 4 Corners Oktoberfest

Hosted by Thill & Associates, Waddell & Reed, Rosewood Furniture Gallery, and Beautiful Beginnings

You are invited to the 29th Annual 4 Corners Oktoberfest! Hosted by Thill & Associates, Waddell & Reed, Rosewood Furniture Gallery, and Beautiful Beginnings. To say, "Thank you", these businesses will be serving up beer & bratwurst and all the fixin's - Free! Under the awning at 2010 16th Street from 5:00 to 8:00 pm. Music, Door Prizes and Networking!



Friday, October 4th

Hosted by Fuller Industries, LLC

As part of the first ever Manufacturing Day on Friday, October 4th, Fuller Industries, LLC will open their doors for a special Chamber After Hours from 5:00 pm to 8:00 pm with great food and beverages, plant tours from 5:30 pm to 7:00 pm followed by a short program with Fuller Industries CEO, Mark Chalfant, speaking and awesome giveaways.



UWCK Campaign Update

The United Way of Central Kansas Campaign has officially begun! The annual Kickoff Event "Join Our Camp" was a great success, raising over \$30,000 for our 22 Community Partners. This event would not be possible without the support of our fantastic sponsors, numerous volunteers, Board Members, and engaged guests who come out to support us.

With the Campaign underway, we will be busy in September with many events that we hope you can join us for! We will be hosting three Chamber Coffees in September. On September 5th, we will be at Jack Kilby Square in Great Bend, then on the 6th at Sunflower Bank in Ellinwood and on the 12th at the Larned Area Chamber of Commerce. Follow us on Facebook or check out our website, www.uwck.org to learn more!

Our second annual Ellinwood Tailgate Kickoff will be on September 13th. This is a free will donation event in cooperation with USD 355 and the Ellinwood Eagle Backers. We will be grilling up fresh, Ellinwood Packing hamburgers, along with chips and water. There will be family fun games to enjoy as well before kickoff for the Ellinwood Homecoming game.

Throughout the month of September, also be looking for us at area football games to present our annual poster recipients with their posters and honoring the winning drawers! If you want to support the work that UWCK and our 22 Community Partners do in Barton & Pawnee Counties you can donate at www.uwck.org or mail a donation to 1125 Williams, Great Bend, KS 67530. Every dollar counts!

